

# Installation Instructions fischer Zykon-Anchor



ETA-98/0004, FZA,  
FZA A4, FZA C



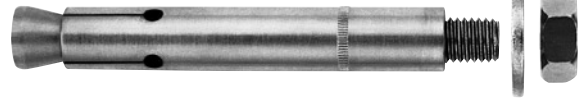
For extraordinary actions e.g. in  
nuclear power plants. See approval  
for anchor types\*.



FZA



FZA-D



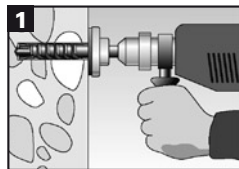
FZA-I



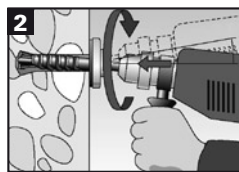
Shock-tested/  
BZS approval for  
shock-resilient  
fixings in civil  
defence areas.

The regulations of the building-authority approvals ETA-98/0004 and respectively Z-21.1-1646 have to be observed.

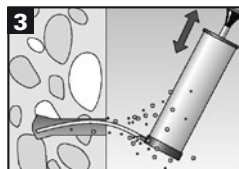
## Pre-positioned installation



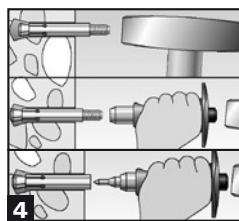
Create a drill hole at right angles to the surface of the anchor base with a hammer drill, using the corresponding Zykon universal drill bit FZUB. The required drill depth is reached once the FZUB depth stop meets the concrete.



Once the FZUB depth stop meets the concrete, create the drill hole undercut by making circular swivelling movements with the hammer drill while the hammer mechanism is engaged. Press the hammer drill firmly against the anchor base; 1-2 swivelling movements is sufficient for  $\varnothing$  14 mm, with 3-5 movements for  $\varnothing$  18 mm and  $\varnothing$  22 mm.

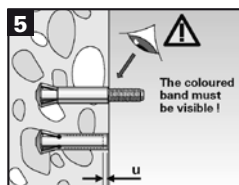


Clean drill hole;  
blow out or clean with a vacuum cleaner.



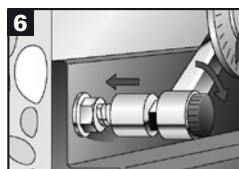
Insert the anchor into the drill hole and then drive the expansion sleeve in with hammer-set device FZE Plus, using a manual hammer. The anchor sleeve sits min. 1 mm behind the surface of the concrete (see picture 5).

Installing the FZA-I with internal thread the centring pin FZE-I should be used additionally.



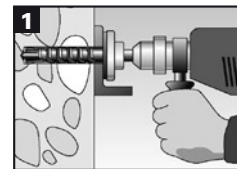
The anchor is correctly expanded if the green colour on the thread of the tapered bolt is visible (FZA) or the gap  $u$  (FZA-I) (when installed acc. to table 8, annex 7) is fulfilled.

The coloured band must be visible!

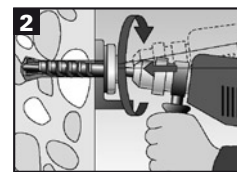


Mount installation object (e.g. anchor plate), washer and nut or screw (for FZA-I) and apply installation torque with torque spanner. The thickness of the fixture have to fulfill the terms of the related approval.

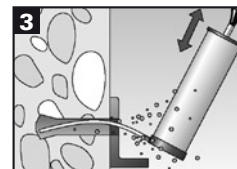
## Push-through installation



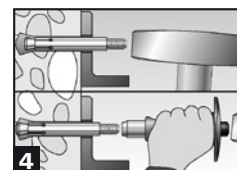
Create a drill hole through the installation object at right angles to the surface of the anchor base with a hammer drill, using the corresponding Zykon universal drill bit FZUB. The required drill depth is reached once the FZUB depth stop meets the concrete.



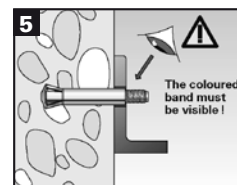
Once the FZUB depth stop meets the concrete, create the drill hole undercut by making circular swivelling movements with the hammer drill while the hammer mechanism is engaged. Press the hammer drill firmly against the fixture; 1-2 swivelling movements is sufficient for  $\varnothing$  14 mm, with 3-5 movements for  $\varnothing$  18 mm and  $\varnothing$  22 mm.



Clean drill hole;  
blow out or clean with a vacuum cleaner.

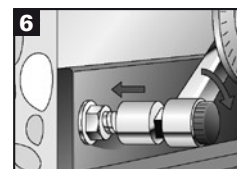


Insert the anchor into the drill hole and then drive the expansion sleeve in with hammer-set device FZE Plus, using a manual hammer. The anchor sleeve sits min. 1 mm behind the surface of the attachment (see picture 5).



The anchor is correctly expanded if the green colour on the thread of the tapered bolt is visible.

The coloured band must be visible!

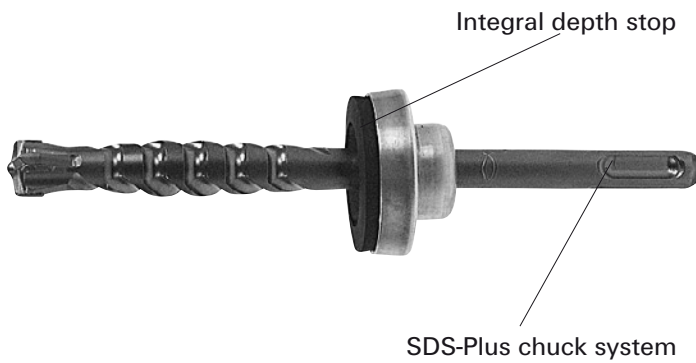


Mount installation object (e.g. anchor plate), washer and nut or screw (for FZA-I) and apply installation torque with torque spanner.

\* Approval Z-21.1-1646 covers the following anchor types:

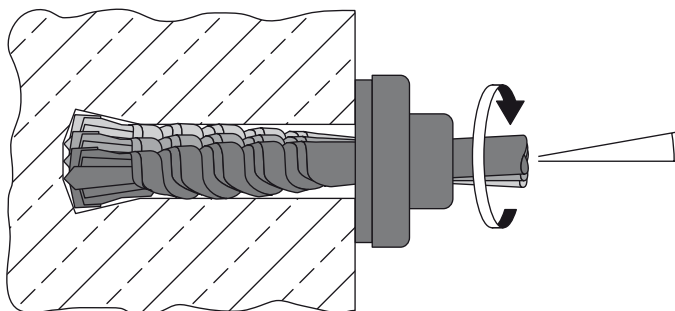
FZA: FZA 10 x 40 M 6, FZA 12 x 40 M 8, FZA 14 x 40 M 10 in galvanised steel and stainless steel A4.

FZA-I: FZA 12 x 40 M 6 I, FZA 14 x 60 M 8 I, FZA 18 x 80 M 10 I in galvanised steel and stainless steel A4.





The Zykron Universal drill FZUB drills a geometrically exact undercut drill hole in one operation without tool change.

The FZUB fits into all hammer drills with "SDS-Plus" chuck system and offers the same capacity and tool life. A feature of this drill is its new geometrical form and integral depth stop. These characteristics produce the simple and economical undercut drill hole.



**One operation:  
cylindrical drilling – swivel undercut.**

**The correct installation of fischer Zykron anchors in accordance with the official approval is possible only with the following original fischer Zykron tools.**

Drilling and setting tools		Suitable for fixing types Material: zinc plated, passivated steel, stainless steel A4 and high corrosion-resistant steel 1.4529				Qty. per pack
	Type	Art. No.	Bolt anchor	Through anchor	Internally-threaded anchor	
 Zykron Universal drill FZUB	FZUB 10 x 40	60622	FZA 10 x 40 M 6	-----	-----	1
	FZUB 12 x 40	60623	FZA 12 x 40 M 8	-----	FZA 12 x 40 M 6 I	1
	FZUB 12 x 50	60627	FZA 12 x 50 M 8	FZA 12 x 50 M 8 D/10	FZA 12 x 50 M 6 I	1
	FZUB 12 x 60	60625	-----	FZA 12 x 60 M 8 D/10	-----	1
	FZUB 12 x 80	60626	-----	FZA 12 x 80 M 8 D/30	-----	1
	FZUB 14 x 40	60624	FZA 14 x 40 M 10	-----	-----	1
	FZUB 14 x 60	60628	FZA 14 x 60 M 10	-----	FZA 14 x 60 M 8 I	1
	FZUB 14 x 80	60629	-----	FZA 14 x 80 M 10 D/20	-----	1
	FZUB 14 x 100	60630	-----	FZA 14 x 100 M 10 D/40	-----	1
	FZUB 18 x 80	60634	FZA 18 x 80 M 12	-----	FZA 18 x 80 M 10 I	1
	FZUB 18 x 100	60632	-----	FZA 18 x 100 M 12 D/20	-----	1
	FZUB 18 x 130	60633	-----	FZA 18 x 130 M 12 D/50	-----	1
	FZUB 22 x 100	60636	FZA 22 x 100 M 16	-----	FZA 22 x 100 M 12 I	1
	FZUB 22 x 125	60638	FZA 22 x 125 M 16	FZA 22 x 125 M 16 D/25	FZA 22 x 125 M 12 I	1
 Setting tool FZE Plus <small><sup>1)</sup> without centring pin</small>	FZE Plus 10 <sup>1)</sup>	44637	FZA 10 x ... M 6	-----	-----	1
	FZE Plus 12	44638	FZA 12 x ... M 8	FZA 12 x ... M 8 D	FZA 12 x ... M 6 I	1
	FZE Plus 14	44639	FZA 14 x ... M 10	FZA 14 x ... M 10 D	FZA 14 x ... M 8 I	1
	FZE Plus 18	44640	FZA 18 x ... M 12	FZA 18 x ... M 12 D	FZA 18 x ... M 10 I	1
	FZE Plus 22	44641	FZA 22 x ... M 16	FZA 22 x ... M 16 D	FZA 22 x ... M 12 I	1