

# MP-MXI pipe ring

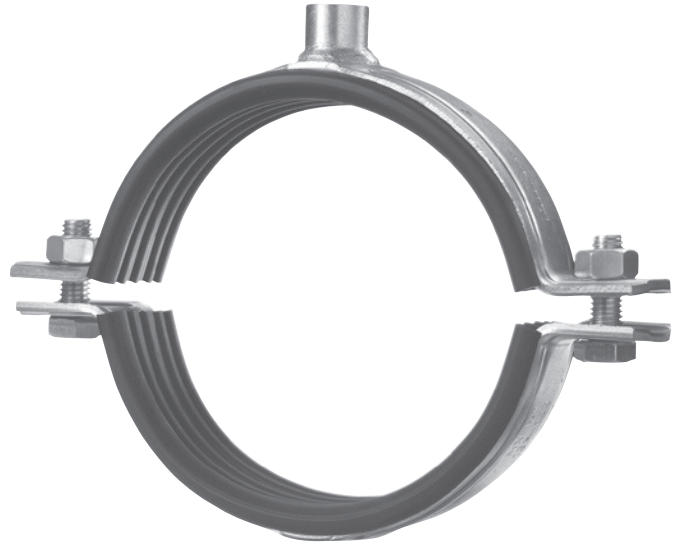
For "extra" heavy duty

**Fields of application:**

- Industrial pipe fitting
- Mechanical installations
- Process and control lines
- Heavy-duty pipe runs

**Benefits:**

- Solid connection boss, welded all round
- Strong clamping bolts for high loads
- Non-slip, pre-fitted profiled rubber inlay
- Suitable for the installation of pipes under dynamic loading if used with vibration damping components



**Technical data:**

Max permissible load for suspensions up to 3"	max. F <sub>~</sub> = 6000 N
from 4" up to 274 mm diameter	max. F <sub>~</sub> = 10000 N
from 324 up to 406 mm diameter	max. F <sub>~</sub> = 15000 N
from 457 up to 508 mm diameter	max. F <sub>~</sub> = 17000 N
Pipe ring material:	STW 22 steel as per DIN EN 10 111 (galvanized)
Rubber inlay material:	EPDM
Temperature resistance:	-40°C to +120°C
Shore A hardness:	40° ± 5° Shore-A
Noise reduction:	Δ L <sub>A</sub> = 16 dB (A)



Firestop



**Fire rating data in minutes**

Size [mm/inch]	F30 F <sub>~</sub> [kN]	F60 F <sub>~</sub> [kN]	F90 F <sub>~</sub> [kN]	F120 F <sub>~</sub> [kN]
Ø 2-3"	≤ 1.7	≤ 1.1	≤ 0.85	≤ 0.7
Ø 4"-275 mm	≤ 3.0	≤ 2.0	≤ 1.6	≤ 1.35

**Recommended guide values for dynamic loading of MP-MXI / MP-MX**

**M16 connection boss,  
(max. F<sub>~</sub> 6,000 N)**

**from pipe size 4 (108 mm) up to 274 mm**

% mm	L 100 mm	L 200 mm	L 300 mm	L 400 mm	L 500 mm	L 1000 mm
0.5	●	●	●	●	●	●
1	-	●	●	●	●	●
1.5	-	●	●	●	●	●
2	-	●	●	●	●	●
4	-	-	●	●	●	●
6 *	-	-	-	-	●*	●
8	-	-	-	-	●	●
10	-	-	-	-	-	●

The determined values apply only if the MFP-GP 16 base plate and M16 threaded rod of the 8.8 grade are used.

**¾" connection boss,  
(max. F<sub>~</sub> 10,000 N)**

**from pipe size 2" (60 mm) up to 133 mm**

% mm	L 100 mm	L 200 mm	L 300 mm	L 400 mm	L 500 mm	L 1000 mm
0.5	●	●	●	●	●	●
1	-	●	●	●	●	●
1.5	-	●	●	●	●	●
2	-	-	●	●	●	●
4	-	-	-	●	●	●
6	-	-	-	-	●	●
8	-	-	-	-	●	●
10	-	-	-	-	-	●

The determined values apply only if the MFP-GP ¾" base plate and GR-G ¾" threaded pipe are used.

**1 connection boss,  
(max. F<sub>~</sub> 10,000 N)**

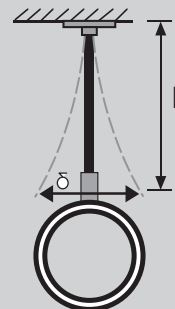
**from pipe size 5" (137 mm) up to 274 mm**

% mm	L 100 mm	L 200 mm	L 300 mm	L 400 mm	L 500 mm	L 1000 mm
0.5	●	●	●	●	●	●
1	-	●	●	●	●	●
1.5	-	●	●	●	●	●
2	-	-	●	●	●	●
4	-	-	-	●	●	●
6	-	-	-	-	●	●
8	-	-	-	-	●	●
10	-	-	-	-	-	●

The determined values apply only if the MFP-GP 1 base plate and GR-R 1 threaded pipe are used.

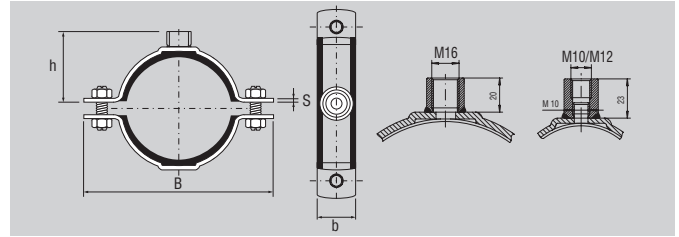
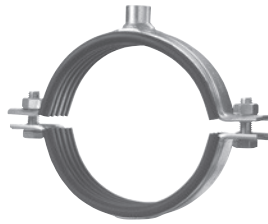
● Fatigue strength (2×10<sup>6</sup> load cycles) as per the S-N curve

**\* Example:** Is the shown pipe fastening resistant to dynamic fatigue stressing?  
**Vorgabe:** Known: Threaded base plate with M16 connection and anchor approved for tension zone. Distance between and ceiling or wall, L, 500 mm.  
 Max. side movement caused by vibration, %, in mm = 6 mm  
**Result:** Resistant to fatigue stressing (2×10<sup>6</sup> load cycles) allowing for dimension L = min. 500 mm



### MP-MXI pipe ring

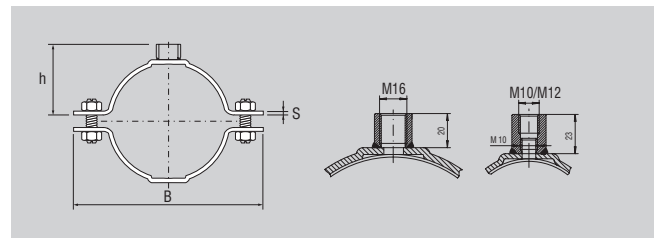
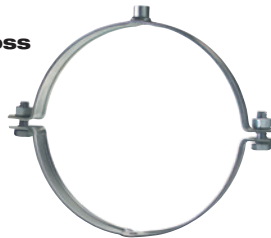
With metric connection boss and insulating inlay as per DIN 4109



Size (mm/inch)	Clamping range, d (mm)	Connection thread	Clamping bolts	Dimensions			Packaging contents (pcs)	Ordering designation		Item no.
				B (mm)	s×b (mm)	h (mm)				
2	60– 65	M10/M12	M10	142	3×30	64	25	MP-MXI 2	M10/M12	▲ 372226
2 ½	73– 78	M10/M12	M10	156	3×30	71	25	MP-MXI 2½	M10/M12	▲ 372227
3	88– 93	M10/M12	M10	172	3×30	78	25	MP-MXI 3	M10/M12	▲ 372228
4	108–116	M16	M12	210	4×40	90	25	MP-MXI 4	M16	▲ 372229
125	122–126	M16	M12	221	4×40	95	25	MP-MXI 125	M16	▲ 372230
133	131–137	M16	M12	231	4×40	100	10	MP-MXI 133	M16	▲ 372231
5	139–144	M16	M12	238	4×40	104	10	MP-MXI 5	M16	▲ 372232
159	159–166	M16	M12	261	4×40	115	10	MP-MXI 159	M16	▲ 372233
6	163–170	M16	M16	265	4×40	117	10	MP-MXI 6	M16	▲ 372234
177.8	177–182	M16	M16	284	4×40	123	10	MP-MXI 177.8	M16	▲ 372235
193.7	192–200	M16	M16	303	4×40	132	10	MP-MXI 193.7	M16	▲ 372236
210	210–218	M16	M16	321	4×40	141	10	MP-MXI 210	M16	▲ 372237
219	219–228	M16	M16	330	4×40	146	10	MP-MXI 219	M16	▲ 372238
244.5	244–253	M16	M16	355	4×40	158	10	MP-MXI 244.5	M16	▲ 372239
267/274	267–274	M16	M16	375	4×40	167	10	MP-MXI 267/274	M16	▲ 372240
275	275–282	M16	M16	384	4×40	173	10	MP-MXI 275	M16	▲ 372241
324	315–324	M16	M16	441	5×50	190	1	MP-MXI 324	M16	▲ 372242
326	325–330	M16	M16	445	5×50	192	1	MP-MXI 326	M16	▲ 372243
355	348–356	M16	M16	471	5×50	205	1	MP-MXI 355	M16	▲ 372244
368	364–372	M16	M16	488	5×50	213	1	MP-MXI 368	M16	▲ 372245
406	400–409	M16	M16	525	5×50	232	1	MP-MXI 406	M16	▲ 372246
457	454–462	M16	M16	586	6×70	259	1	MP-MXI 457	M16	▲ 372247
508	500–508	M16	M16	632	6×70	282	1	MP-MXI 508	M16	▲ 372248

### MP-MX

Pipe ring with metric connection boss



Size (mm/inch)	Clamping range, d (mm)	Connection thread	Clamping bolts	Dimensions			Packaging contents (pcs)	Ordering designation		Item no.
				B (mm)	s×b (mm)	h (mm)				
2	60– 65	M10/M12	M10	132	3×30	60	25	MP-MX 2	M10/M12	▲ 372272
2½	73– 78	M10/M12	M10	146	3×30	67	25	MP-MX 2½	M10/M12	▲ 372273
3	88– 93	M10/M12	M10	161	3×30	74	25	MP-MX 3	M10/M12	▲ 372274
4	108–116	M16	M12	198	4×40	84	25	MP-MX 4	M16	▲ 372275
125	122–128	M16	M12	210	4×40	89	25	MP-MX 125	M16	▲ 372276
133	132–138	M16	M12	221	4×40	94	10	MP-MX 133	M16	▲ 372277
5	139–144	M16	M12	226	4×40	98	10	MP-MX 5	M16	▲ 372278
159	159–166	M16	M12	249	4×40	109	10	MP-MX 159	M16	▲ 372279
6	163–170	M16	M16	253	4×40	111	10	MP-MX 6	M16	▲ 372280
177.8	177–182	M16	M16	272	4×40	117	10	MP-MX 177.8	M16	▲ 372281
193.7	192–200	M16	M16	290	4×40	126	10	MP-MX 193.7	M16	▲ 372282
210	210–218	M16	M16	309	4×40	135	10	MP-MX 210	M16	▲ 372283
219	219–228	M16	M16	318	4×40	140	10	MP-MX 219	M16	▲ 372284
244.5	244–253	M16	M16	343	4×40	152	10	MP-MX 244.5	M16	▲ 372285
267/274	267–274	M16	M16	363	4×40	162	10	MP-MX 267/274	M16	▲ 372286
275	275–282	M16	M16	372	4×40	167	10	MP-MX 275	M16	▲ 372287
324	315–324	M16	M16	429	5×50	184	1	MP-MX 324	M16	▲ 372288
326	325–330	M16	M16	433	5×50	186	1	MP-MX 326	M16	▲ 372289
355	348–356	M16	M16	460	5×50	199	1	MP-MX 355	M16	▲ 372290
368	364–372	M16	M16	476	5×50	207	1	MP-MX 368	M16	▲ 372291
406	400–409	M16	M16	514	5×50	226	1	MP-MX 406	M16	▲ 372292
457	454–462	M16	M16	574	6×70	253	1	MP-MX 457	M16	▲ 372293
508	500–508	M16	M16	620	6×70	276	1	MP-MX 508	M16	▲ 372294