

MP-MRXI pipe ring

For pipe fastenings in corrosive surroundings
in the diameter range 244 to 508 mm



Fields of application:

- Heating and industry
- Food industry (except production)
- Water treatment

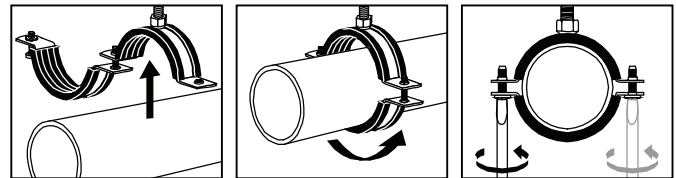
Benefits:

- Solid connection boss, welded all round
- High loading capacity up to 13,000 N
- Strong half-rings (hoops) for high stability
- Strong clamping bolts (M16) for high loads
- High resistance to corrosion (A5 stainless steel)
- Non-slip (bonded), pre-fitted rubber inlay



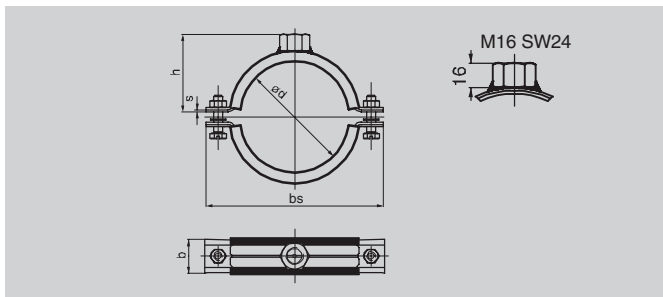
Technical data:

Max permissible load for suspensions	
244.5 to 406 mm diameter,	F _{rec.} = 10000 N
457 to 508 mm diameter,	F _{rec.} = 13000 N
Pipe ring material:	A5 1.4571 / DIN 17441
Rubber inlay material:	EPDM
Temperature resistance:	-50 to +120°C
Shore A hardness (DIN53 505):	50 ± 5
Noise reduction:	Δ L _A = 16 dB (A)
Stability:	aging, ozone, weather and hot water resistant
Not for use in painting processes	



MP-MRXI pipe ring

With metric connection boss
and insulating inlay as per DIN 4109



Size (mm)	Clamping range, d (mm)	Connection thread / width across flats	Clamping bolts	Dimensions bs (mm) b x s (mm)	h (mm)	Packaging contents (pcs)	Ordering designation	Item no.
244.5	244-253	M16 / SW21	M16	355 50 x 4	147.5	10	MP-MRXI 244,5	374213
273	267-274	M16 / SW21	M16	372 50 x 4	156	10	MP-MRXI 273	374214
280	275-282	M16 / SW21	M16	384 50 x 4	162	10	MP-MRXI 280	374215
324	314-324	M16 / SW21	M16	441 50 x 4	182.5	1	MP-MRXI 324	374216
326	324-330	M16 / SW21	M16	445 50 x 4	184.5	1	MP-MRXI 326 *	374217
355	348-356	M16 / SW21	M16	471 50 x 4	197.5	1	MP-MRXI 355 *	374218
406	400-409	M16 / SW21	M16	524 50 x 4	224	1	MP-MRXI 406 *	374219
457	454-462	M16 / SW21	M16	585 70 x 5	251.5	1	MP-MRXI 457 *	374220
508	500-508	M16 / SW21	M16	631 70 x 5	274.5	1	MP-MRXI 508 *	374221

* Available on request