

MP-MXI-F pipe ring

for „extra“ heavy duty installations exposed to moderate corrosiveness

Fields of applications:

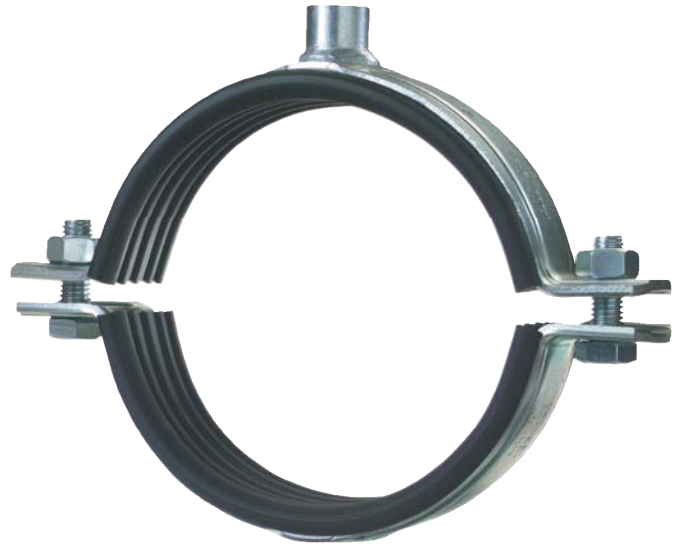
- Industrial pipe fitting
- Mechanical installations
- Process and control lines
- heavy-duty pipe runs

Benefits:

- Solid connection boss, welded all round
- Strong clamping bolts for high loads
- Non-slip, pre-fitted profiled rubber inlay
- Suitable for the installation of pipes under dynamic loading if used with vibration damping components.

Technical data:

Max permissible load for suspensions: up to 3"	max. $F_{rec} = 6000\text{ N}$
from 4" up to 274 mm diameter	max. $F_{rec} = 10000\text{ N}$
from 324 up to 406 mm diameter	max. $F_{rec} = 15000\text{ N}$
from 457 up to 508 mm diameter	max. $F_{rec} = 17000\text{ N}$
Pipe ring material:	STW 22 steel as per DIN EN 10111 (HDG 45 μm)
Rubber inlay material:	EPDM
Temperature resistance:	-50°C to +120°C
Shore A hardness:	50° ± 5° Shore-A
Noise reduction:	$\Delta L_A = 16\text{ dB (A)}$



Firestop



Recommended guide values for dynamic loading of MP-MXI-F/MP-MX-F

M16 connection boss, (max. F_{rec} 6000 N)

from pipe size 4" (108 mm) up to 274 mm

δ mm	L 100 mm	L 200 mm	L 300 mm	L 400 mm	L 500 mm	L 1000 mm
0.5	●	●	●	●	●	●
1	-	●	●	●	●	●
1.5	-	●	●	●	●	●
2	-	●	●	●	●	●
4	-	-	●	●	●	●
6*	-	-	-	-	●*	●
8	-	-	-	-	●	●
10	-	-	-	-	-	●

The determined values apply only if the MFP-GP16-F base plate and M16 threaded rod of the 8.8 grade are used.

3/4" connection boss, (max. F_{rec} 10000 N)

from pipe size 2" (60 mm) up to 133 mm

δ mm	L 100 mm	L 200 mm	L 300 mm	L 400 mm	L 500 mm	L 1000 mm
0.5	●	●	●	●	●	●
1	-	●	●	●	●	●
1.5	-	●	●	●	●	●
2	-	-	●	●	●	●
4	-	-	-	●	●	●
6	-	-	-	-	●	●
8	-	-	-	-	●	●
10	-	-	-	-	-	●

The determined values apply only if the MFP-GP3/4"-F base plate and GR-G3/4"-F threaded pipe are used.

1" connection boss, (max. F_{rec} 10000 N)

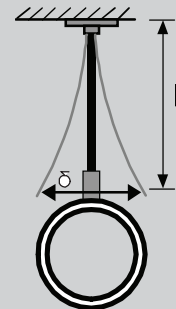
from pipe size 5" (137 mm) up to 274 mm

δ mm	L 100 mm	L 200 mm	L 300 mm	L 400 mm	L 500 mm	L 1000 mm
0.5	●	●	●	●	●	●
1	-	●	●	●	●	●
1.5	-	●	●	●	●	●
2	-	-	●	●	●	●
4	-	-	-	●	●	●
6	-	-	-	-	●	●
8	-	-	-	-	●	●
10	-	-	-	-	-	●

The determined values apply only if the MFP-GP1"-F base plate and GR-G1"-F threaded pipe are used.

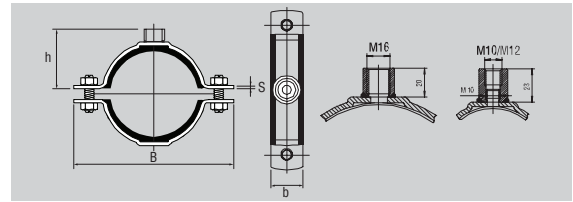
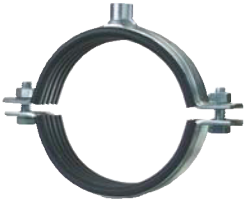
● Fatigue strength (2×10^6 load cycles) as per the S-N curve.

*** Example:** Is the shown pipe fastening resistant to dynamic fatigue stressing?
Demand: Known: Threaded base plate with M16 connection and anchor approved for tension zone. Distance between and ceiling or wall, L, 1500 mm. Max. side movement caused by vibration, δ , in mm = 6 mm.
Result: Resistant to fatigue stressing (2×10^6 load cycles) allowing for dimension L = min. 500 mm.



MP-MXI-F (HDG)

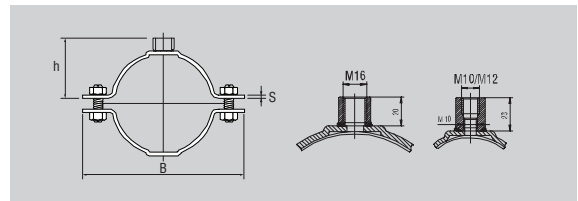
Pipe ring with metric connection boss and insulating inlay as per DIN 4109



Size [mm/inch]	Clamping range d [mm]	Connection thread	Clamping bolts	Dimensions			Packaging contents (pcs)	Ordering designation		Item no.
				B [mm]	s×b [mm]	h [mm]				
2"	60–65	M10/M12	M10	142	3×30	64	25	MP-MXI-F 2"	M10/M12	374897
2½"	73–78	M10/M12	M10	156	3×30	71	25	MP-MXI-F 2½"	M10/M12	374898
3"	88–93	M10/M12	M10	172	3×30	78	25	MP-MXI-F 3"	M10/M12	374899
4"	108–116	M16	M12	210	4×40	90	25	MP-MXI-F 4"	M16	374900
125	122–126	M16	M12	221	4×40	95	25	MP-MXI-F 125	M16	374901
133	131–137	M16	M12	231	4×40	100	10	MP-MXI-F 133	M16	374902
5"	139–144	M16	M12	238	4×40	104	10	MP-MXI-F 5"	M16	374903
159	159–166	M16	M12	261	4×40	115	10	MP-MXI-F 159	M16	374904
6"	163–170	M16	M12	265	4×40	117	10	MP-MXI-F 6"	M16	374905
177,8	177–182	M16	M16	284	4×40	123	10	MP-MXI-F 177,8	M16	374906
193,7	192–200	M16	M16	303	4×40	132	10	MP-MXI-F 193,7	M16	374907
210	210–218	M16	M16	321	4×40	141	10	MP-MXI-F 210	M16	374908
219	219–228	M16	M16	330	4×40	146	10	MP-MXI-F 219	M16	374909
244,5	244–253	M16	M16	355	4×40	158	10	MP-MXI-F 244,5	M16	374910
267/274	267–274	M16	M16	375	4×40	167	10	MP-MXI-F 267/274	M16	374911
275	275–282	M16	M16	384	4×40	173	10	MP-MXI-F 275	M16	374912
324	315–324	M16	M16	441	5×50	190	1	MP-MXI-F 324	M16	374913
326	325–330	M16	M16	445	5×50	192	1	MP-MXI-F 326	M16	374914
355	348–356	M16	M16	471	5×50	205	1	MP-MXI-F 355	M16	374915
368	364–372	M16	M16	488	5×50	213	1	MP-MXI-F 368	M16	374916
406	400–409	M16	M16	525	5×50	232	1	MP-MXI-F 406	M16	374917
457	454–462	M16	M16	586	6×70	259	1	MP-MXI-F 457	M16	374918
508	500–508	M16	M16	632	6×70	282	1	MP-MXI-F 508	M16	374919

MP-MX-F (HDG)

Pipe ring with metric connection boss without insulating inlay



Size [mm/inch]	Clamping range d [mm]	Connection thread	Clamping bolts	Dimensions			Packaging contents (pcs)	Ordering designation		Item no.
				B [mm]	s×b [mm]	h [mm]				
2"	60–65	M10/M12	M10	132	3×30	60	25	MP-MX-F 2"	M10/M12*	374943
2½"	73–78	M10/M12	M10	146	3×30	67	25	MP-MX-F 2½"	M10/M12*	374944
3"	88–93	M10/M12	M10	161	3×30	74	25	MP-MX-F 3"	M10/M12*	374945
4"	108–116	M16	M12	198	4×40	84	25	MP-MX-F 4"	M16*	374946
125	122–128	M16	M12	210	4×40	89	25	MP-MX-F 125	M16*	374947
133	132–138	M16	M12	221	4×40	94	10	MP-MX-F 133	M16*	374948
5"	139–144	M16	M12	226	4×40	98	10	MP-MX-F 5"	M16*	374949
159	159–166	M16	M12	249	4×40	109	10	MP-MX-F 159	M16*	374950
6"	163–170	M16	M12	253	4×40	111	10	MP-MX-F 6"	M16*	374951
177,8	177–182	M16	M16	272	4×40	117	10	MP-MX-F 177,8	M16*	374952
193,7	192–200	M16	M16	290	4×40	126	10	MP-MX-F 193,7	M16*	374953
210	210–218	M16	M16	309	4×40	135	10	MP-MX-F 210	M16*	374954
219	219–228	M16	M16	318	4×40	140	10	MP-MX-F 219	M16*	374955
244,5	244–253	M16	M16	343	4×40	152	10	MP-MX-F 244,5	M16*	374956
267/274	267–274	M16	M16	363	4×40	162	10	MP-MX-F 267/274	M16*	374957
275	275–282	M16	M16	372	4×40	167	10	MP-MX-F 275	M16*	374958
324	315–324	M16	M16	429	5×50	184	1	MP-MX-F 324	M16*	374959
326	325–330	M16	M16	433	5×50	186	1	MP-MX-F 326	M16*	374960
355	348–356	M16	M16	460	5×50	199	1	MP-MX-F 355	M16*	374961
368	364–372	M16	M16	476	5×50	207	1	MP-MX-F 368	M16*	374962
406	400–409	M16	M16	514	5×50	226	1	MP-MX-F 406	M16*	374963
457	454–462	M16	M16	574	6×70	253	1	MP-MX-F 457	M16*	374964
508	500–508	M16	M16	620	6×70	276	1	MP-MX-F 508	M16*	374965

* Available on request