



paragon



product
selector

contents

design loop

- 6. Oriental
- 8. Parallel Lines
- 10. Parallel Reflections
- 12. Strobe
- 14. Furian
- 16. Codec
- 18. Workspace Linear
- 20. Vantage
- 22. Artisan
- 24. Neutron

loop pile

- 30. Ashbury
- 32. Macaw
- 34. Workspace Contrast
- 36. Colourquest
- 38. Toccarre
- 40. Diversity
- 42. Workspace Loop
- 44. Sirocco
- 46. Colourworks
- 48. Auriga
- 50. Orion
- 52. Cetus
- 54. Draco

design cutpile

- 58. Maestro38
- 60. Harmonise

cutpile

- 64. Workspace Cutpile
- 66. Solaris

entrance matting

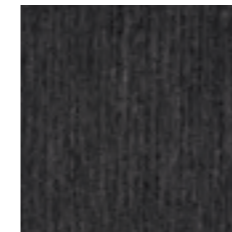
- 70. Eco Entrance Tyre Tile

design loop

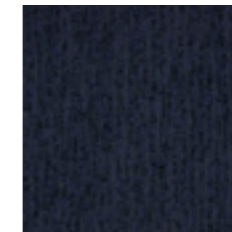
Oriental Collection
Parallel Lines
Parallel Reflections
Strobe
Furian
Codec
Workspace Linear
Vantage
Artisan
Neutron

Oriental

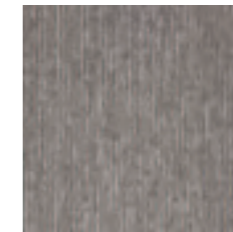
A mix of 10 colourways and 2 patterns creating 20 colour options to enhance any interior concept



Miyake anthracite
(also available in tokachi pattern)



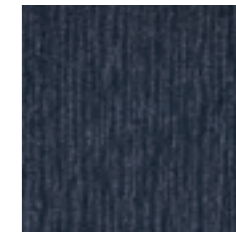
Miyake cobalt
(also available in tokachi pattern)



Miyake hessian
(also available in okachi pattern)



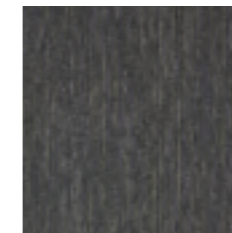
Miyake jasmine
(also available in tokachi pattern)



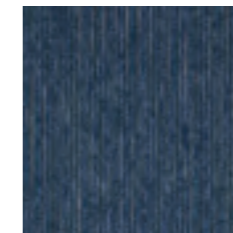
Miyake lagoon
(also available in tokachi pattern)



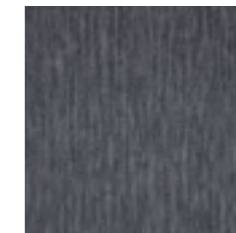
Miyake lichen
(also available in tokachi pattern)



Miyake pampas
(also available in tokachi pattern)



Miyake peacock
(also available in tokachi pattern)



Miyake smoke
(also available in tokachi pattern)



Miyake stone
(also available in tokachi pattern)

S **Style**
1/12" gauge Tufted Multi-level
Textured Patterned Loop Pile

Y **Yarn Construction**
100% Solution Dyed Nylon

Pile Yarn Weight
745 gsm

Pile Height
4mm

Total Weight
4125 gsm

Total Height
7mm

Backing
Bitumen

Dimensions
50cm x 50cm

Wear Classification
Heavy Contract

Anti-static
AATCC134
< 3kv body voltage

Colour Fastness
To Light (BS EN ISO105-B02) 5
To Water (BS EN ISO105-E01) 4
To Shampoo (BS 1006-UK-TB1) 4
To Rubbing (BS EN ISO105-X12) 4

Flammability
Floorcoverings tested to BS4790
(Hot Metal Nut Test) Low Radius
of Char

Castor Chair Test
BS EN 985
> 2.4 Suitable for continuous use
with castor chairs

10 **Warranty**
10 Years

Available in a wide range of 20 options
consisting of 10 colourways and 2 patterns

Recyclable – Product can be repurposed at the end
of its lifecycle as a non-standard option

100% Solution Dyed Nylon

Pile Treatment Stain Protector

Soil Repellent

Suitable for prestigious locations

Miyake available in stock

10 year warranty

Manufactured in the cleanest carpet tile factory
in Europe

Up to 50% recycled content in the bitumen backing

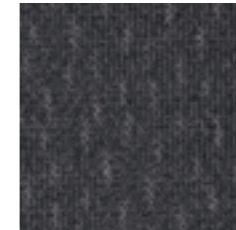


Parallel Lines

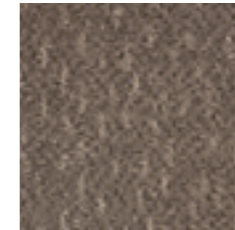
reflect your style in two premium structured loop piles with modern colourways



Parallel Lines
Seville Grey



Parallel Lines
Melbourne Blue



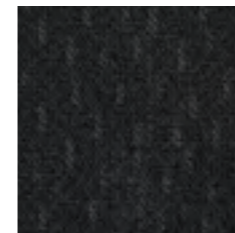
Parallel Lines
Washington Beige



Parallel Lines
Monaco Sand



Parallel Lines
Milan Cream



Parallel Lines
Detroit Charcoal



Style
1/12" Multi level Textured
Patterned Loop Pile Tile



Yarn Construction
100% Solution Dyed Nylon BASF
Zeftron 2000 Nylon with built in
static control



Pile Yarn Weight
814 gsm



Pile Height
4 - 4.5mm



Total Weight
4322 gsm



Total Height
7mm



Backing
Bitumen



Dimensions
50cm x 50cm



Wear Classification
Heavy Contract



Anti-static
< 2Kv body voltage
Suitable for use with computers



Colour Fastness
To Light (BS EN ISO105-B02)
To Water (BS EN ISO105-E01)

Better than 6
5



Flammability
Floorcoverings tested to BS4790
(Hot Metal Nut test)
Char

Low Radius of
Char



Euroclass Flammability
(BS EN ISO 9339)
(BS EN ISO11925-2)

Bfl-s1



Castor Chair Test
BS EN 985
PR > 2.9 Continuous use
PL > 2.5 Continuous use

Warranty
10 Years

Heavy contract suitable for commercial,
retail, leisure, schools and colleges

10 year warranty

Structured loop pile

1/12th gauge

100% solution dyed nylon

Up to 50% recycled content in the bitumen backing



Parallel Reflections

reflect your style in two premium structured loop piles with modern colourways



Parallel Reflections
Madrid Grey



Parallel Reflections
Sydney Blue



Parallel Reflections
New York



Parallel Reflections
Paris Sand



Parallel Reflections
Rome Cream



Parallel Reflections
Pittsburgh Charcoal



Style
1/12" Multi Level Textured
Patterned Loop Pile Tile



Yarn Construction
100% Solution Dyed Nylon BASF
Zeftron 2000 Nylon with built in
static control



Pile Yarn Weight
814 gsm



Pile Height
4 - 4.5mm



Total Weight
4322 gsm



Total Height
7mm



Backing
Bitumen



Dimensions
50cm x 50cm



Wear Classification
Heavy Contract



Anti-static
< 2Kv body voltage
Suitable for use with computers



Colour Fastness
To Light (BS EN ISO105-B02) Better than 6
To Water (BS EN ISO105-E01) 5



Flammability
Floorcoverings tested to BS4790
(Hot Metal Nut test) Low Radius of
Char



Euroclass Flammability
(BS EN ISO 9339) Bfl-s1
(BS EN ISO11925-2)



Castor Chair Test
BS EN 985
PR > 2.9 Continuous use
PL > 2.5 Continuous use



Warranty
10 Years

Heavy contract suitable for commercial,
retail, leisure, schools and colleges

10 year warranty

Structured loop pile

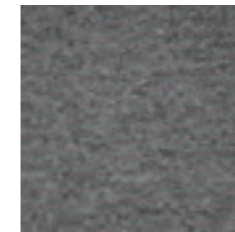
1/12th gauge

100% solution dyed nylon

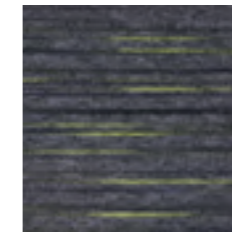
Up to 50% recycled content in the bitumen backing

Strobe

Cutting edge Linear design for contemporary schemes



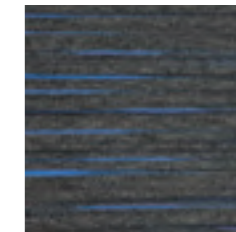
Strobe
Grey Fusion Highlight



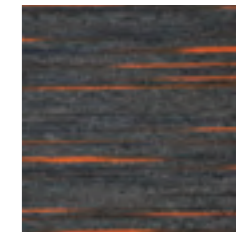
Strobe
Flex 2620



Strobe
Blaze 2604



Strobe
Extreme 2606



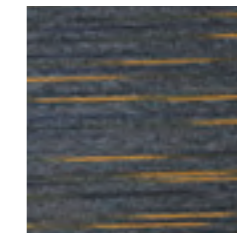
Strobe
Ignite 2603



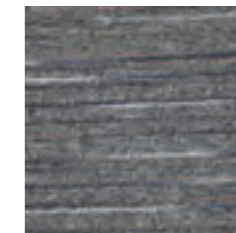
Strobe
Spark 2621



Strobe
Rapid 2614



Strobe
Force 2605



Strobe
Plasma 2619



Style
1/10" gauge



Yarn Construction
100% Solution Dyed Nylon / Space Dyed Nylon



Pile Yarn Weight
610 gsm (Grey Fusion 580gsm)



Pile Height
3.5mm



Total Weight
4390 gsm (Tile)



Total Thickness
6mm (Tile)



Backing
Bitumen Backed



Dimensions
50cm x 50cm



Wear Classification
Heavy Contract



Anti-static
< 2kV body voltage
Suitable for use with computers



Colour Fastness
To Light (ISO105 - B02) > 6
To Water (ISO 105 - E01) > 5
To Rubbing (ISO 105 - X12) > 5dry 4-5 wet



Flammability
Flammability (BS5287) Assessment and labeling of Textile Floor coverings tested to BS4790
Low radius of Char
(Hot Metal Nut Test) CE Flam rating - Bfl-s1



Castor Chair Test
BS EN 985 continuous use



Warranty
10 Years

Suitable for office, commercial, retail, schools, colleges and leisure

Heavy Contract

10 Year Warranty

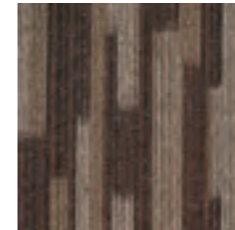
Available in 8 linear designed colourways + 1 Grey Accent Colour

610 gsm (Grey Fusion 580gsm)
Pile Yarn Weight

Up to 50% of the total product is recycled content

Furian

For the designer



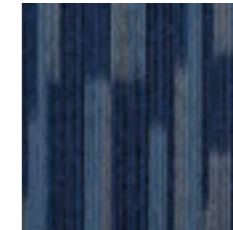
Furian
cocoa F404



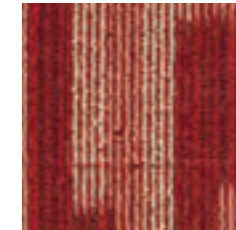
Furian
honey pot F403



Furian
riverstrip F405



Furian
halcyon blue F402



Furian
fireburst F401

S **Style**
Multi-level Textured Tufted Loop Pile

Y **Yarn Construction**
100% Solution Dyed Nylon

P **Pile Yarn Weight**
678gsm

P **Pile Height**
4mm

B **Backing**
Bitumen

P **Pile Treatment**
Stain Protector and a Soil Repellent

D **Dimensions**
50cm x 50cm

W **Wear Classification**
Heavy Contract

A **Anti-static**
AATCC 134, Passes <3KV

H **Hot Metal Nut**
BS 4790, Passes Low radius of effects of ignition

R **Radiant Panel Tests**
ASTM E648, Class 1

C **Castor Chair Test**
BS EN 985, Passes <2.4 Continuous use

10 **Warranty**
10 Years

Heavy Contract

10 Year Warranty

100% Solution Dyed Nylon

Ideal for office and commercial areas

Suitable for offices, retail, schools,
colleges and leisure

Recyclable - Product can be repurposed at
the end of its lifecycle as a non standard option

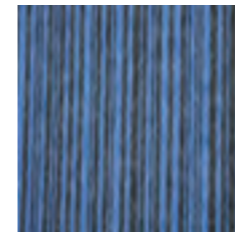
Up to 50% of the total product is recycled content

heavy contract : 5 colourways

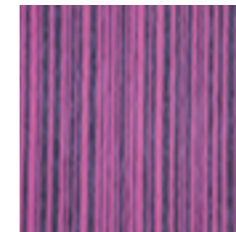


Codec

Total recycled content of up to 50% heavy contract



Codec Digital



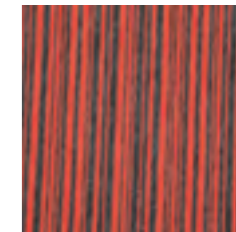
Codec Hex



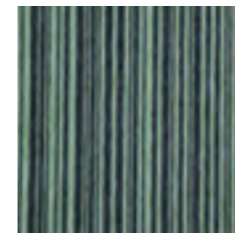
Codec Axis



Codec Binary



Codec Index



Codec Pathway

- S Style**
Tufted Loop Pile Tile 1/10" gauge
- Y Yarn Construction**
100% Solution Dyed Nylon
- Pile Yarn Weight**
600 gsm
- Pile Height**
3mm
- Pile Density**
172,000 tufts per m2
- Total Weight**
4380 gsm
- Total Height**
6mm
- Backing**
Bitumen Backed
- Dimensions**
50cm x 50cm

- Wear Classification**
Heavy Contract
- Anti-static**
Suitable for use in computer rooms
- Colour Fastness**
To Light (BS EN ISO105-B02) Better than 6
To Shampoo BS 1006 - UK - TB Change in shade 4 - 5
To Rubbing (BS EN ISO105-X12) Wet 4 - 5, Dry 4 - 5
- Flammability**
Floorcoverings tested to BS4790 Low Radius of Char
(Hot Metal Nut Test)
- Euroclass Flammability**
(BS EN ISO 9239) Bfl-s1
(BS EN ISO 11925-2)
- Castor Chair Test**
BS EN 985 r value 2.8 Suitable for continuous use
- Warranty**
10 Years

Heavy Contract

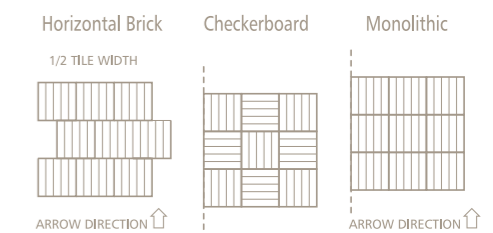
10 Year Warranty

100% Solution Dyed Nylon

Suitable for Commercial, Education, Health and Retail markets

Recyclable - Product can be repurposed at the end of its lifecycle as a non standard option

Total recycled content of up to 50%

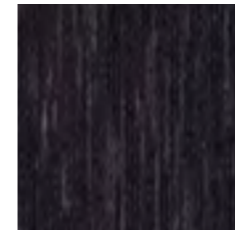


heavy contract : 6 colourways

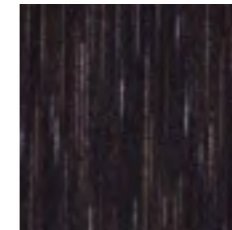


Workspace Linear

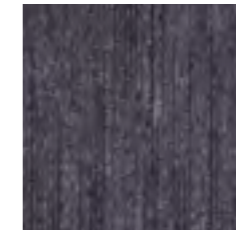
Make the most of any workspace with our premier linear design



Workspace Linear 5004 - Apollo Blue



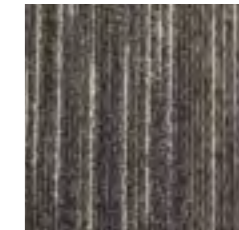
Workspace Linear 5009 - Metro Blue



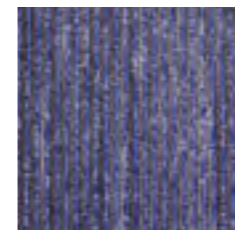
Workspace Linear 3001 - Millennium Blue



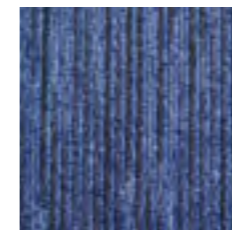
Workspace Linear 4009 - Clockhouse Blue



Workspace Linear 5181 - Victoria Blue



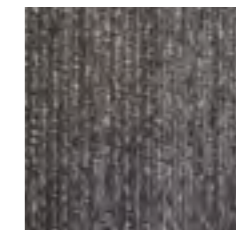
Workspace Linear 3012 - Broadway



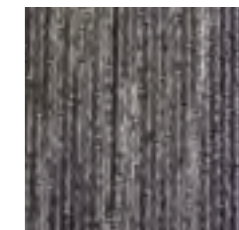
Workspace Linear 4018 - Regents Canal



Workspace Linear 7002 - Nobu Grey



Workspace Linear 3013 - Docklands Grey



Workspace Linear 5014 - Islington Tunnel



Workspace Linear 7005 - Savoy Ochre



Workspace Linear 3008 - Bond St Brown



Workspace Linear 7008 - West End Fawn



Workspace Linear 7017 - Alber Green



Workspace Linear 3016 - West Park Plum

S Style
Tufted Loop Pile Tile 1/10" gauge

Y Yarn Construction
Solution Dyed Nylon/
Space Dyed Nylon

P Pile Yarn Weight
600 gsm

P Pile Height
3mm

T Total Weight
4380 gsm

T Total Thickness
6mm

B Backing
Bitumen Backed

D Dimensions
50cm x 50cm

W Wear Classification
Heavy Contract

A Anti-static
< 2Kv body voltage
Suitable for use with computers

C Colour Fastness
To Light BS EN (ISO105 - B02) 6
To Water BS EN (ISO105 - E01) 4 - 5

F Flammability
Euroclass (BS EN ISO 9239-1)
(BS EN ISO 11925-2) Bfl - s1

C Castor Chair Test
> 2.9 Suitable for continuous use BS EN 985 /

10 Warranty
10 Years

Suitable for office, commercial, retail,
schools, colleges, and leisure

Heavy Contract

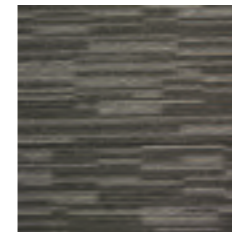
10 year warranty

Available in 15 linear designed colourways

600 gsm Pile Yarn Weight

Up to 50% recycled content in the bitumen backing

Vantage



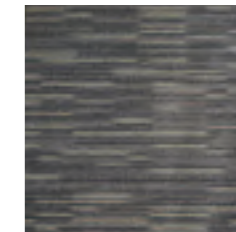
Vantage
White Russian L204



Vantage
Mai Tai L203



Vantage
Mountain Range L205



Vantage
Cosmopolitan L202



Vantage
Daquiri L201



Vantage
Black Russian L206

Style
Textured Tufted Loop Pile

Pile Fibre
100% New Generation Polypropylene

Dyed Method
Solution Dyed

Tufting Gauge
1/12"

Total Weight
678gsm

Pile Height
4-4.5mm

Primary Backing
Polyester Non-Woven

Tile Backing
Bitumen

Dimensions
50cm x 50cm

Backing Options & Width
PVC and Comfort Back available

Wear Characteristics
Heavy Contract

Castor Chair Test
BS EN 985, Passes <2.4 Continuous use

Dimensional Stability
BS EN 986, Passes <0.2%

Electrostatic Properties
AATCC 134, Passes <3KV

Light Fastness
ISO 105 B02 min 6

Hot Metal Nut
BS 4790, Passes Low radius of effects of ignition

Radiant Panel Tests
Passes Methenamine Pill Test,
ASTM D 2859 DOCHF# 1-70

Heavy Contract

10 Year Warranty

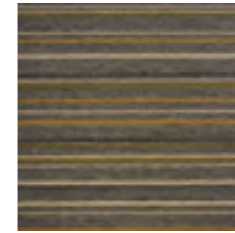
100% New Generation Polypropylene

Suitable for offices, retail, schools, colleges and leisure

Recyclable - Product can be repurposed at the end of its lifecycle as a non standard option

50% of the total backing is recycled

Artisan



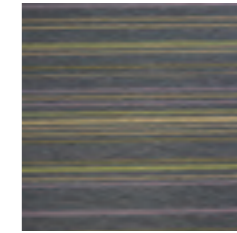
Artisan
Argento Grey A132



Artisan
Pearl Grigio A137



Artisan
Longchamps A134



Artisan
Blue Sera A131

Style
Textured Tufted Loop Pile

Pile Fibre
100% New Generation
Polypropylene

Dyed Method
Solution Dyed

Tufting Gauge
1/10"

Total Weight
678gsm

Pile Height
3.5mm

Primary Backing
Polyester Non-Woven

Tile Backing
Bitumen

Dimensions
50cm x 50cm

Backing Options & Width
PVC and Comfort Back available

Wear Characteristics
Heavy Contract

Dimensional Stability
BS EN 986, Passes <0.2%

Electrostatic Properties
AATCC 134, Passes <3KV

Light Fastness
ISO 105 B02 min 6

Hot Metal Nut
BS 4790, Passes Low radius of effects of ignition

Radiant Panel Tests
Passes Methenamine Pill Test,
ASTM D 2859 DOCHF# 1-70

Heavy Contract

10 Year Warranty

100% New Generation Polypropylene

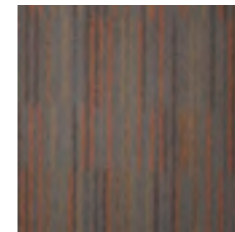
Suitable for offices, retail, schools,
colleges and leisure

Recyclable - Product can be repurposed at the
end of its lifecycle as a non standard option

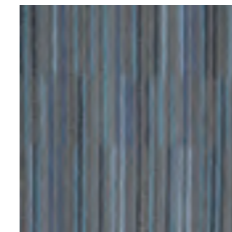
50% of the total backing is recycled

heavy contract : 4 colourways

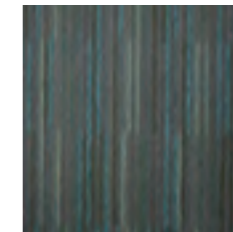
Neutron For the designer



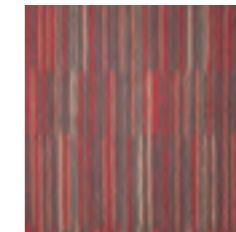
Neutron haze



Neutron frost blue



Neutron seaboard



Neutron tiger red



Neutron polaris



Neutron raven

S **Style**
Multi-level Textured Tufted Loop Pile

Y **Yarn Construction**
100% Solution Dyed Nylon

P **Pile Yarn Weight**
544gsm

P **Pile Height**
4mm

B **Backing**
Bitumen

P **Pile Treatment**
Stain Protector and a Soil Repellent

D **Dimensions**
50cm x 50cm

W **Wear Classification**
Heavy Contract

A **Anti-static**
AATCC 134, Passes <3KV

H **Hot Metal Nut**
BS 4790, Passes Low radius of effects of ignition

R **Radiant Panel Tests**
ASTM E648, Class 1

C **Castor Chair Test**
BS EN 985, Passes <2.4 Continuous use

10 **Warranty**
10 Years

Heavy Contract

10 Year Warranty

100% Solution Dyed Nylon

Ideal for office and commercial areas

Suitable for offices, retail, schools, colleges and leisure

Recyclable - Product can be repurposed at the end of its lifecycle as a non standard option

Up to 50% of the total product is recycled content



Rotherham Metropolitan Borough Council

18,000M² ACROSS MULTIPLE PRODUCTS

Paragon Carpets and its sister company Mat.Works Flooring Solutions, have teamed up to deliver a total soft Floorcoverings package for Rotherham City Council's new offices. A number of products from the sister companies were used to help Rotherham Council deliver a project which is at the cutting edge of design.

Paragon had a number of their carpet tiles specified on the project including 4 colourways of the new Strobe product, Lime, Plasma, Spark and Ignite (Lime is a bespoke to the client, lime green), which was used extensively in breakout zones and meeting rooms. The new vibrant linear patterned carpet features a flash of lime through the pile, which was exactly what the councils in house team were looking for.

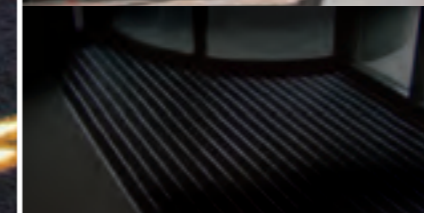
Mat.Works Supplied the main entrance matting areas which incorporated Smart Scraper a unique matting system, which can be used outside. Following this was Platoon Brush secondary carpet matting incorporating the councils crest. Andy Gordon National Sales Manager for Mat.Works said "The main entrance threw up a number of issues in terms of getting the correct amount of matting into the installation, we brought the smart scraper element outside which meant we didn't have to encroach onto the inner floor".

Complementary colours were used in the main office areas to define space in an open plan environment. Blocks of plain pile Colour Works were used in conjunction with a complementary specially designed Strobe linear product to define the spaces between workstations and walkways to great effect. The design team wanted "the space to flow" and this has been achieved to great effect, said Colin Constable. The Paragon area sales manager worked closely with the in house design team to make sure that the colour brief was met and adhered to.

For more information on this project and any of the products contained within, contact the paragon marketing department at

apotts@paragon-carpets.co.uk

Office no on **01709 763839**



Paragon, Farfield Park,
Manvers, Wath-upon-Deerne,
Rotherham, S63 5DB.
T. +44 (0)1709 763 839 W:
www.paragon-carpets.co.uk

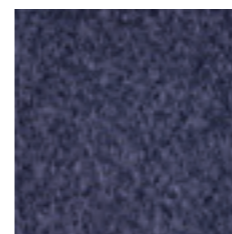
mat.works





Ashbury

Attractive loop pile tile, ideal for any heavy contract application



Ashbury
Azurite



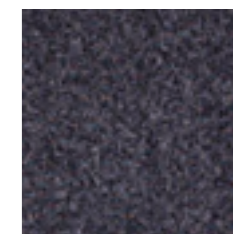
Ashbury
Blue Lagoon



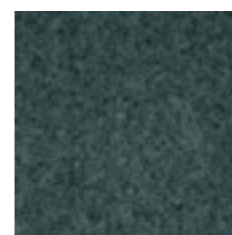
Ashbury
Charcoal



Ashbury
Midnight Blue



Ashbury
Moon Stone



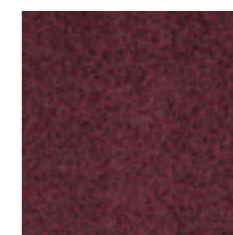
Ashbury
Mountain Green



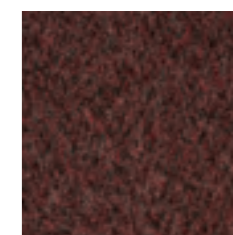
Ashbury
Olivine



Ashbury
Pewter



Ashbury
Red Sky



Ashbury
Rich Earth

- S** **Style**
Tufted Loop Pile Tile 1/10" gauge
- Y** **Yarn Construction**
100% Nylon
- W** **Pile Yarn Weight**
575 gsm
- H** **Pile Height**
3.5mm
- D** **Pile Density**
161,540 tufts per m²
- T** **Total Weight**
4355 gsm
- H** **Total Height**
6.5mm
- B** **Backing**
Bitumen
- D** **Dimensions**
50cm x 50cm
- W** **Wear Classification**
Heavy Contract

- A** **Anti-static**
Suitable for use in computer rooms
- C** **Colour Fastness**
To Light (BS EN ISO105-B02) Better than 6
To Water (BS EN ISO105-E01) 5
To Rubbing (BS EN ISO105-X12) 5 Dry, 4-5 Wet
- F** **Flammability**
Floorcoverings tested to BS4790 Low Radius of Char
(Hot Metal Nut Test)

Euroclass Flammability
(BS EN ISO 9239) Bfl-s1
(BS EN ISO 11925-2)
- C** **Castor Chair Test**
BS EN 985 Suitable for continuous use
- 10** **Warranty**
10 Years

Heavy Contract

10 Year Warranty

100% Nylon

Ideal for office and commercial areas

Suitable for offices, retail, schools,
colleges and leisure

Recyclable - Product can be repurposed at
the end of its lifecycle as a non standard option

Up to 50% of the total product is recycled content

Macaw

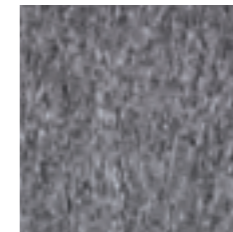
General usage and light commercial



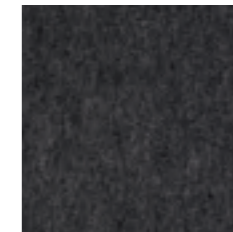
Macaw Aegean



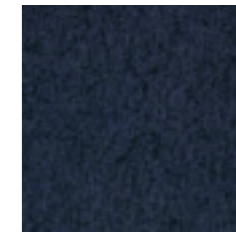
Macaw Paprika



Macaw Pewter



Macaw Quartz



Macaw Sapphire

S **Style**
Tufted Loop Pile Tile 1/10" gauge

Y **Yarn Construction**
100% Polypropylene

P **Pile Yarn Weight**
420 gsm

P **Pile Height**
3.5mm

T **Total Weight**
4200 gsm

P **Pile Density**
133,600 tufts per m²

T **Total Thickness**
7mm

B **Backing**
Bitumen

D **Dimensions**
50cm x 50cm

A **Anti-static**
< 2Kv body voltage. Suitable for use with computers

S **Static Load to BS 4939**
Not less than 80% recovery after 24 hours

C **Colour Fastness**
To Light BS EN (ISO105 - B02) Better than 6

To Shampoo BS 1006 - UK - TB Change in shade 4 - 5

To Rubbing BS EN (ISO105 - X12) Wet 4 - 5, Dry 4 - 5

F **Flammability**
Floorcoverings tested to BS4790 (Hot Metal Nut Test) Low Radius of Char

Suitable for general office and light commercial areas

Attractive encapsulated yarn

Available from stock

Bleach resistant yarn

Easy to clean

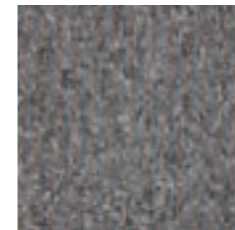
Passes relevant flammability test

Cost-effective floorcovering solution

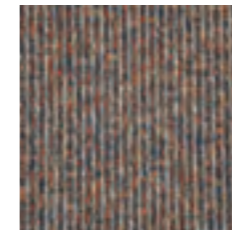
Up to 50% recycled content in the bitumen backing

Workspace Contrast

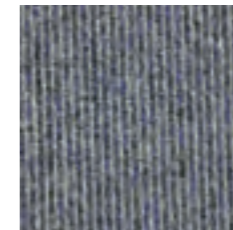
BREEAM 'A' Rated | Total recycled content of up to 65%



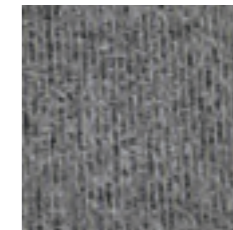
workspace contrast 0301



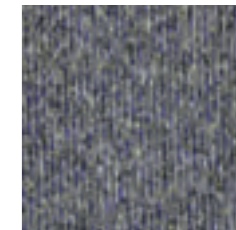
workspace contrast 0302



workspace contrast 0303



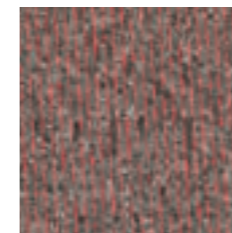
workspace contrast 0304



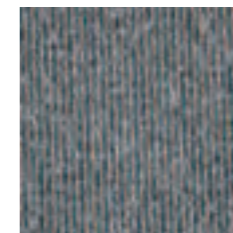
workspace contrast 0305



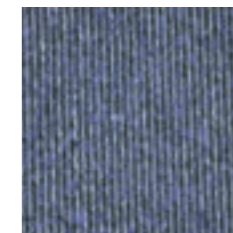
workspace contrast 0306



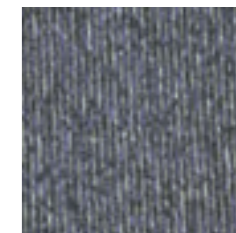
workspace contrast 0307



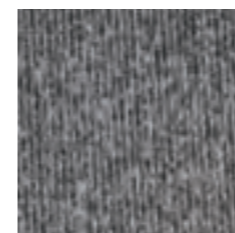
workspace contrast 0308



workspace contrast 0309



workspace contrast 0709



workspace contrast 1109

- S** **Style**
Tufted Loop Pile 1/10" gauge
- Y** **Yarn Construction**
100% Solution Dyed Nylon
- P** **Pile Yarn Weight**
580 gsm
- P** **Pile Height**
3mm
- P** **Pile Density**
172,000 tufts per m²
- T** **Total Weight**
4350 gsm
- T** **Total Thickness**
6mm (Tile)
- B** **Backing**
Bitumen Backed
- D** **Dimensions**
50cm x 50cm
- W** **Wear Classification**
Heavy Contract

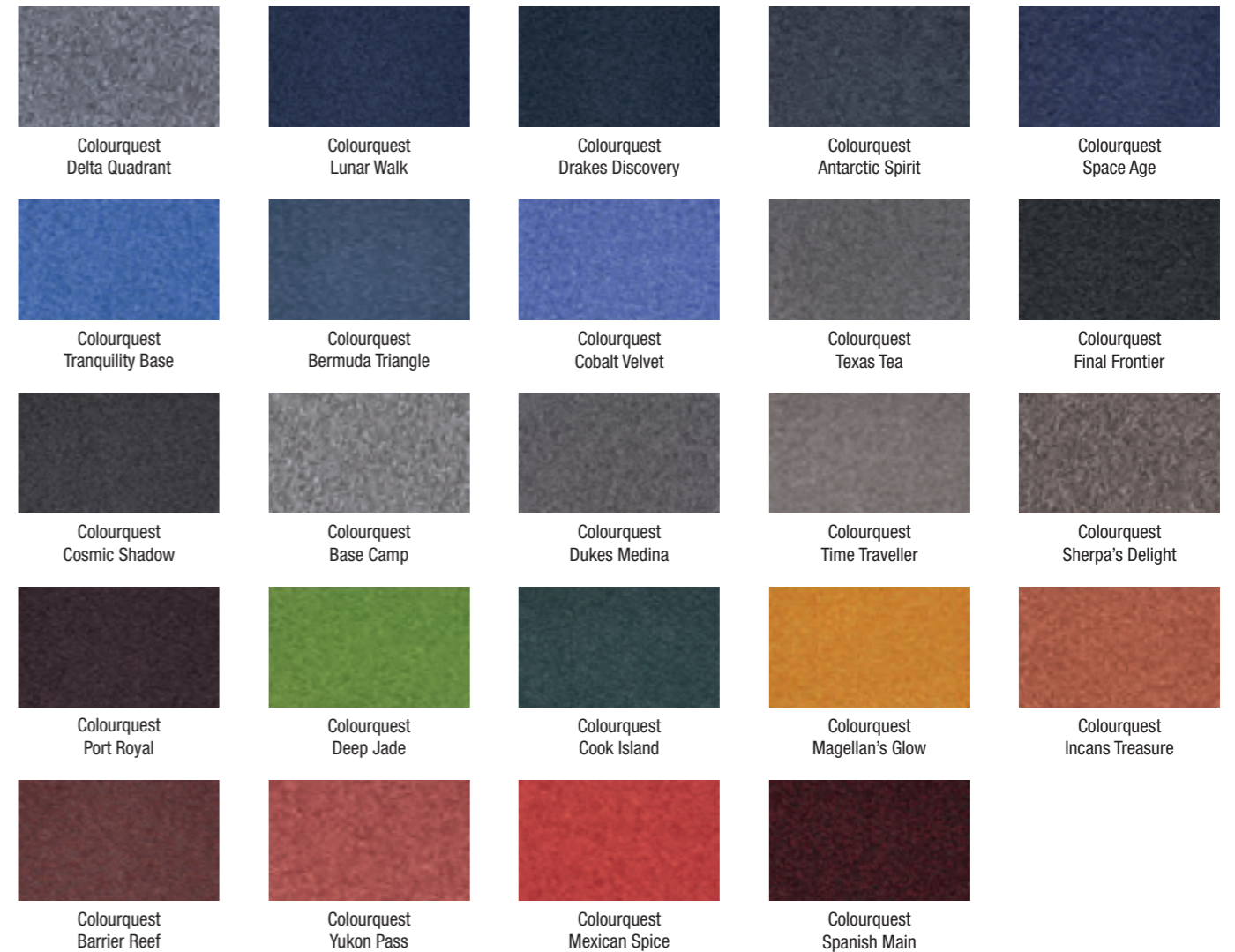
- A** **Anti-static**
< 2Kv body voltage
- C** **Colour Fastness**
To Light BS EN (ISO105 - B02) Better than 6
To Shampoo BS 1006 - UK - TB Change in
To Rubbing BS EN (ISO105 - X12) shade 4 - 5
Wet 4 - 5,
Dry 4 - 5
- F** **Flammability**
Floorcoverings tested to BS4790 Low Radius
(Hot Metal Nut Test) of Char
- E** **Euroclass Flammability (BS EN ISO 9239)**
(BS EN ISO 11925-2) Bfl-s1
- C** **Castor Chair Test**
BS EN 985 / 2.8
- 10** **Warranty**
10 Years

- Seal of Approval BRE A+ Rated
- Up to 10% recycled content in the top cloth
- Up to 50% recycled content in the bitumen backing
- Total recycled content of up to 65%
- Manufactured in the cleanest carpet tile factory in Europe
- Commercial, Education, Health and Retail markets



Colourquest

Heavy contract range with a depth of 24 colours



- S** **Style**
Tufted Loop Pile 1/10" gauge
- Y** **Yarn Construction**
100% Aquafil Alto Nylon
- PSR** **Pile Yarn Weight**
730 gsm
- PH** **Pile Height**
3.5mm
- PD** **Pile Density**
108,350 tufts per m2
- TW** **Total Weight**
4395 gsm
- TH** **Total Height**
7mm
- B** **Backing**
Bitumen
- D** **Dimensions**
50cm x 50cm
- WC** **Wear Classification**
Heavy Contract

- AS** **Anti-static**
Suitable for use in computer rooms
- CF** **Colour Fastness**
To Light (BS EN ISO105-B02) 5
To Wet Rubbing (BS EN ISO105-E01) 3
To Dry Rubbing (BS EN ISO105-X12) 3
- F** **Flammability**
Flammability BS EN ISO 11925.2 CFL - S1
BS EN ISO 9239.1
- CC** **Castor Chair Test**
BS EN 985 3.2
Suitable for continuous use
- 10** **Warranty**
10 Years

Heavy Contract

Available in 12 colours

Aquafil Alto Yarn

10 year warranty

Anti-static

Attractive loop pile surface

Passes the relevant flammability test

Suitable for office and commercial areas

Recyclable - Product can be repurposed at the end of its lifecycle as a non standard option

Toccarre



Toccarre Tutto



Toccarre Moderno



Toccarre Azzurra



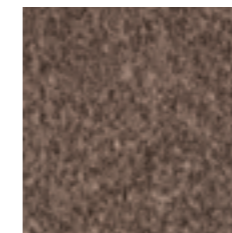
Toccarre Blu



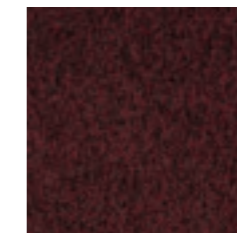
Toccarre Fresco



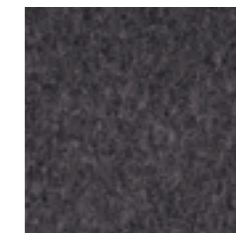
Toccarre Marrone



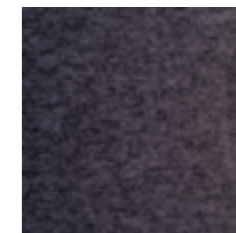
Toccarre Montagna



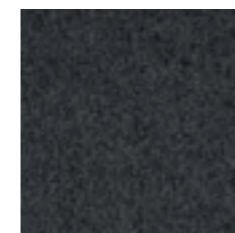
Toccarre Desmo



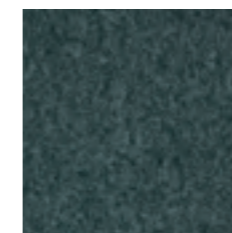
Toccarre Termi



Toccarre Grigia



Toccarre Menta



Toccarre La Mela

S Style
Tufted Loop Pile Tile 1/10" guage

Y Yarn Construction
100% Solution Dyed Nylon

P Pile Yarn Weight
630 gsm

H Pile Height
3mm

D Pile Density
214,567 tufts per m2

T Total Weight
4430 gsm

T Total Thickness
6mm

B Backing
Bitumen

D Dimensions
50cm x 50cm

W Wear Classification
Heavy Contract

A Anti-static
Suitable for use with computers

C Colour Fastness
To Light (BO2) 6
Wet Rubbing (BS1006:B01) 4 - 5
Dry Rubbing (BS1006:X12) 4 - 5
Shampoo (BS1006:UK-TB) 4 - 5

F Flammability
Floorcoverings tested to BS4790 Low Radius of Char

Euroclass Flammability (BS EN 13501) Cfl-s1

C Castor Chair Test
BS EN 985 r value 2.9 Suitable for continuous use

10 Warranty
10 Years

Heavy Contract

10 Year Warranty

100% Solution Dyed Yarn

Suitable for Commercial, Education, Health and Retail markets

Recyclable - Product can be repurposed at the end of its lifecycle as a non standard option

BREEAM 'A+' Rated
Up to 50% recycled content in the bitumen backing





Diversity

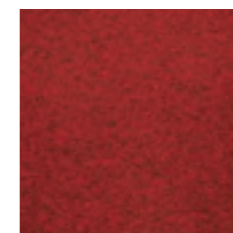
A balanced range of modern, heavy contract colours for any application



Diversity 110



Diversity 650



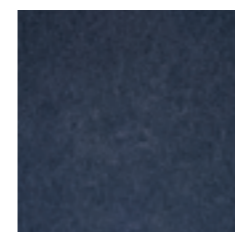
Diversity 210



Diversity 310



Diversity 510



Diversity 610



Diversity 620



Diversity 630



Diversity 640



Diversity 810



Diversity 820



Diversity 830



Style
1/10" gauge



Yarn Construction
100% Solution Dyed Nylon



Pile Yarn Weight
500 gsm



Pile Height
3mm



Total Weight
4280 gsm (Tile)



Total Thickness
5.5mm (Tile)



Backing
Bitumen



Dimensions
50cm x 50cm



Wear Classification
Heavy Contract



Anti-static
< 2kV body voltage
Suitable for use with computers



Colour Fastness
< 2kV body voltage
Suitable for use with computers



Flammability
Flammability (BS5287) Assessment and labeling of
Textile Floor coverings tested to BS4790
Low radius of Char
(Hot Metal Nut Test) CE Flam rating - Bfl-s1



Castor Chair Test
BS EN 985 continuous use



Warranty
10 Years

Suitable for office, commercial, retail, schools,
colleges, and leisure

Heavy Contract
100% Solution Dyed Nylon

10 year Warranty

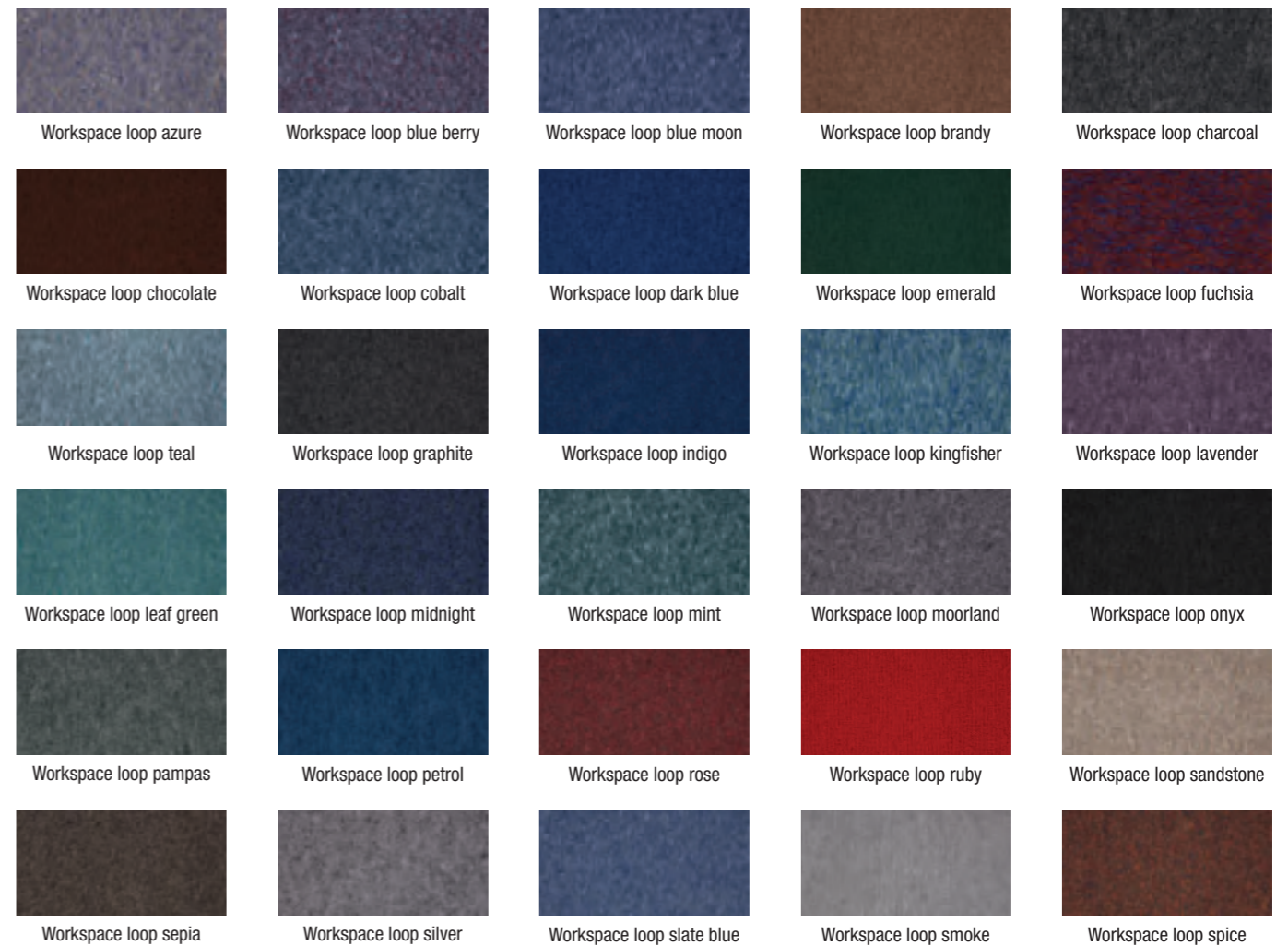
Available in 12 designed colourways

500 gsm
Pile Yarn Weight

Up to 50% of the total product is recycled content

Workspace Loop

BREEAM 'A' Rated | Total recycled content of up to 65% | heavy contract



- S** **Style**
Tufted Loop Pile 1/10" gauge
- Y** **Yarn Construction**
100% Solution Dyed Nylon
- P** **Pile Yarn Weight**
580 gsm
- H** **Pile Height**
3mm
- D** **Pile Density**
172,000 tufts per m2
- T** **Total Weight**
4350 gsm
- T** **Total Thickness**
6mm (Tile)
- B** **Backing**
Bitumen
- D** **Dimensions**
50cm x 50cm
- W** **Wear Classification**
Heavy Contract

- A** **Anti-static**
< 2Kv body voltage
- C** **Colour Fastness**
To Light BS EN (ISO105 - B02) Better than 6
To Shampoo BS 1006 - UK - TB Change in shade 4 - 5
To Rubbing BS EN (ISO105 - X12) Wet 4 - 5, Dry 4 - 5
- F** **Flammability**
Floorcoverings tested to BS4790 (Hot Metal Nut Test) Low Radius of Char
- E** **Euroclass Flammability**
(BS EN ISO 9239) Bfl-s1
(BS EN ISO 11925-2)
- C** **Castor Chair Test**
BS EN 985 / 2.8
- 10** **Warranty**
10 Years

Seal of Approval BRE A+ Rated

Up to 10% recycled content in the top cloth

Up to 50% recycled content in the bitumen backing

Total recycled content of up to 65%

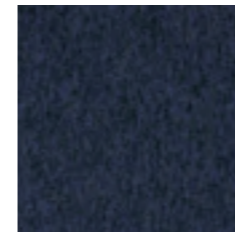
Manufactured in the cleanest carpet tile factory in Europe

Commercial, Education, Health and Retail markets



Sirocco

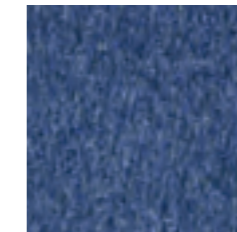
Solid performance and reliability as standard



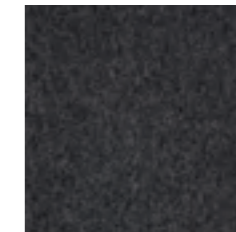
Sirocco Sapphire



Sirocco Aegean



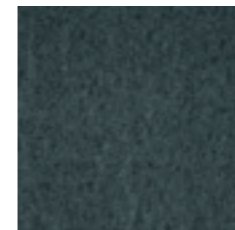
Sirocco Midnight



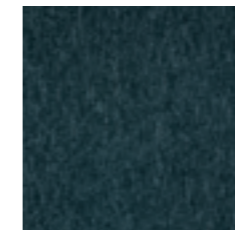
Sirocco Quartz



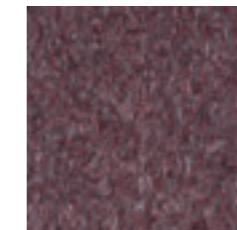
Sirocco Pewter



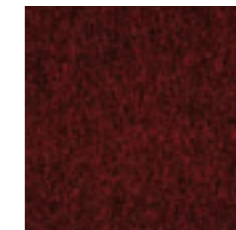
Sirocco Kingfisher



Sirocco Forest



Sirocco Heather



Sirocco Tempest



Sirocco Paprika



Style
Tufted Loop Pile Tile 1/10" gauge



Yarn Construction
100% Polypropylene



Pile Yarn Weight
580 gsm



Pile Height
3.5mm



Total Weight
4360 gsm



Total Thickness
6.5mm



Backing
Bitumen



Dimensions
50cm x 50cm



Wear Classification
Heavy Contract



Anti-static
<2Kv body voltage. Suitable for use with computers



Static Load to BS 4939
Not less than 80% recovery after 24 hours



Colour Fastness
To Light (BS EN ISO105-B02) Better than 6
To Shampoo BS 1006 - UK - TB Change in shade 4 - 5
To Rubbing (BS EN ISO105-X12) Wet 4 - 5, Dry 4 - 5



Flammability
Floorcoverings tested to BS4790 Low Radius of Char
(Hot Metal Nut Test)

Euroclass Flammability (BS EN ISO 9239) Bfl-s1
(BS EN ISO 11925-2)



Warranty
10 Years

Suitable for all Commercial and Education Markets

Contract Rated

10 year Warranty

Available in 10 colourways

580 gsm
Pile Yarn Weight

Up to 50% recycled content in the bitumen backing

contract rated : 10 colourways



Colourworks

10 colourways, a modern palette with sustainability built in



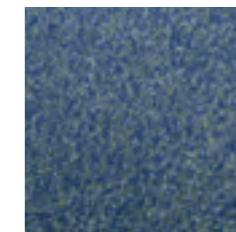
ColourWorks
Bira Brown



ColourWorks
Brands Brown



ColourWorks
Goodwood Grey



ColourWorks
Gulf Blue



ColourWorks
Silver Arrow



ColourWorks
Silverstone



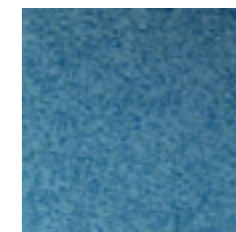
ColourWorks
Spa Blue



ColourWorks
Talladaga Nights



ColourWorks
Tyrell



ColourWorks
French Royal Blue

S Style
Tufted Loop Pile Tile

Y Yarn Construction
100% Nylon 6 [Solution Dyed]
[10% recycled content]

Tuft Gauge
1/10"

P Pile Yarn Weight
800 gsm

H Pile Height
3mm

D Pile Density
145,780 tufts per m²

T Total Weight
4580 gsm

Th Total Thickness
6mm

B Backing
Bitumen

D Dimensions
50cm x 50cm

W Wear Classification
Heavy Contract

A Anti-static
Less than 2Kv
Suitable for use with computers

C Colour Fastness
To Light (BS EN ISO105-B02) 6
To Water (BS EN ISO105-E01) 4 - 5
To Rubbing (BS EN ISO105-X12) 4 - 5

F Flammability
Euroclass Bfl - s1
BS4790 (Hot Metal Nut Test) Low Radius of Char

C Castor Chair Test
BS EN 985 2.9
Suitable for continuous use with castor chairs

10 Warranty
10 Years

100% Nylon 6

Heavy Contract

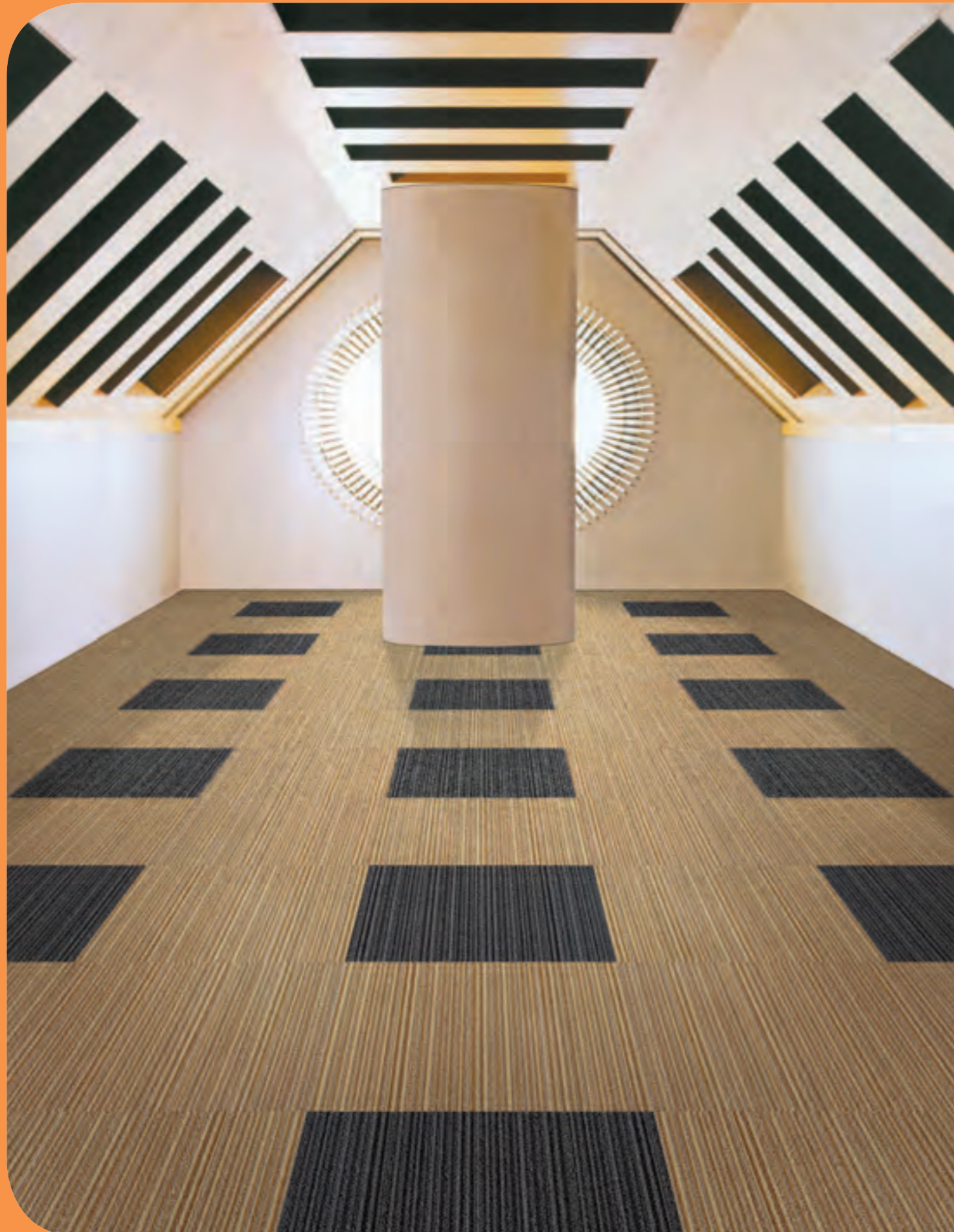
10 colourways

10% recycled content within the yarn

Recyclable - Product can be repurposed at the end of its lifecycle as a non-standard option

Auriga

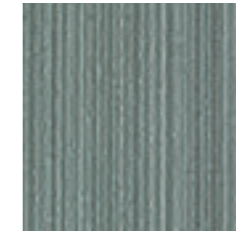
Inspired Perspectives



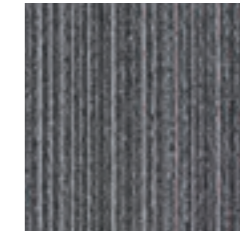
Auriga
Capella 1002



Auriga
Algol 1003



Auriga
Maaz 8004



Auriga
Praja 8005



Auriga
Dolones 8006

Product Name	Auriga
Yarn Type	Universal Nylon
Dye Yarn	Solution Dyed
Construction	Hi / Lo Loop
Pile Height	4.0 / 3.0mm
Tile Size	500mm x 500mm

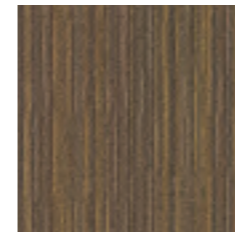
Indoor Air Quality	U.S. CRI Green Label Plus Certificate
Flammability	Bfl-S1
Anti-static	Less than 2kV
Standard Backing	Bitumen
Wear Classification	Heavy Contract

heavy contract : 5 colourways

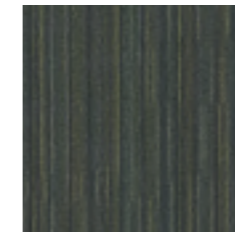


Orion

Inspired Perspectives



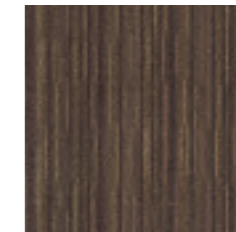
Orion
Rigel



Orion
Meissa



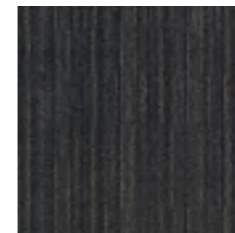
Orion
Gliese



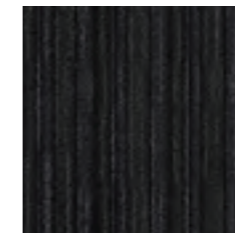
Orion
Bellatrix



Orion
Alnilam



Orion
Saiph



Orion
Betelgeuse

Product Name	Orion
Yarn Type	Universal Nylon
Dye Yarn	Solution Dyed
Construction	Hi / Lo Loop
Pile Height	4.0 / 3.0mm
Tile Size	500mm x 500mm

Indoor Air Quality	U.S. CRI Green Label Plus Certificate
Flammability	Bfl-S1
Anti-static	Less than 2kV
Standard Backing	Bitumen
Wear Classification	Heavy Contract

heavy contract : 7 colourways

Cetus

Inspired Perspectives



Cetus
Denab



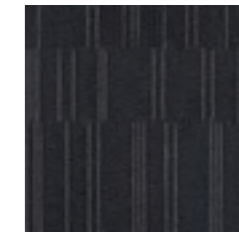
Cetus
Menkar



Cetus
Mira



Cetus
Schemali



Cetus
Collum



Cetus
Rana

Product Name	Cetus
Yarn Type	Universal Nylon 6.6
Dye Yarn	Solution Dyed
Construction	Hi / Lo Loop
Pile Height	5.0 / 3.0mm
Tile Size	500mm x 500mm

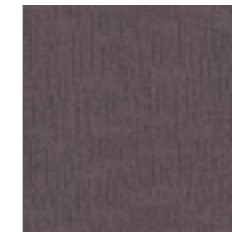
Indoor Air Quality	U.S. CRI Green Label Plus Certificate
Flammability	Bfl-S1
Anti-static	Less than 2kV
Standard Backing	Bitumen
Wear Classification	Heavy Contract

Draco

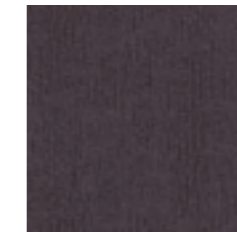
Inspired Perspectives



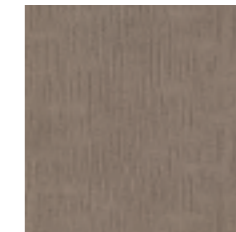
Draco
Thuban



Draco
Struve



Draco
Keplar



Draco
Eltanin



Draco
Asuia



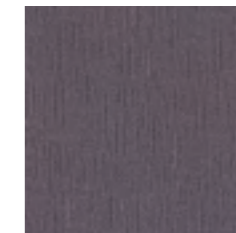
Draco
Adib



Draco
Juza



Draco
Tyl



Draco
Kuma



Draco
Errakis

Product Name	Draco
Yarn Type	Universal Nylon 6.6
Dye Yarn	Solution Dyed
Construction	Hi / Lo Loop
Pile Height	4.5 / 3.0mm
Tile Size	500mm x 500mm

Indoor Air Quality	U.S. CRI Green Lable Plus Certificate
Flammability	Bfl-S1
Anti-static	Less than 2kV
Standard Backing	Bitumen
Wear Classification	Heavy Contract

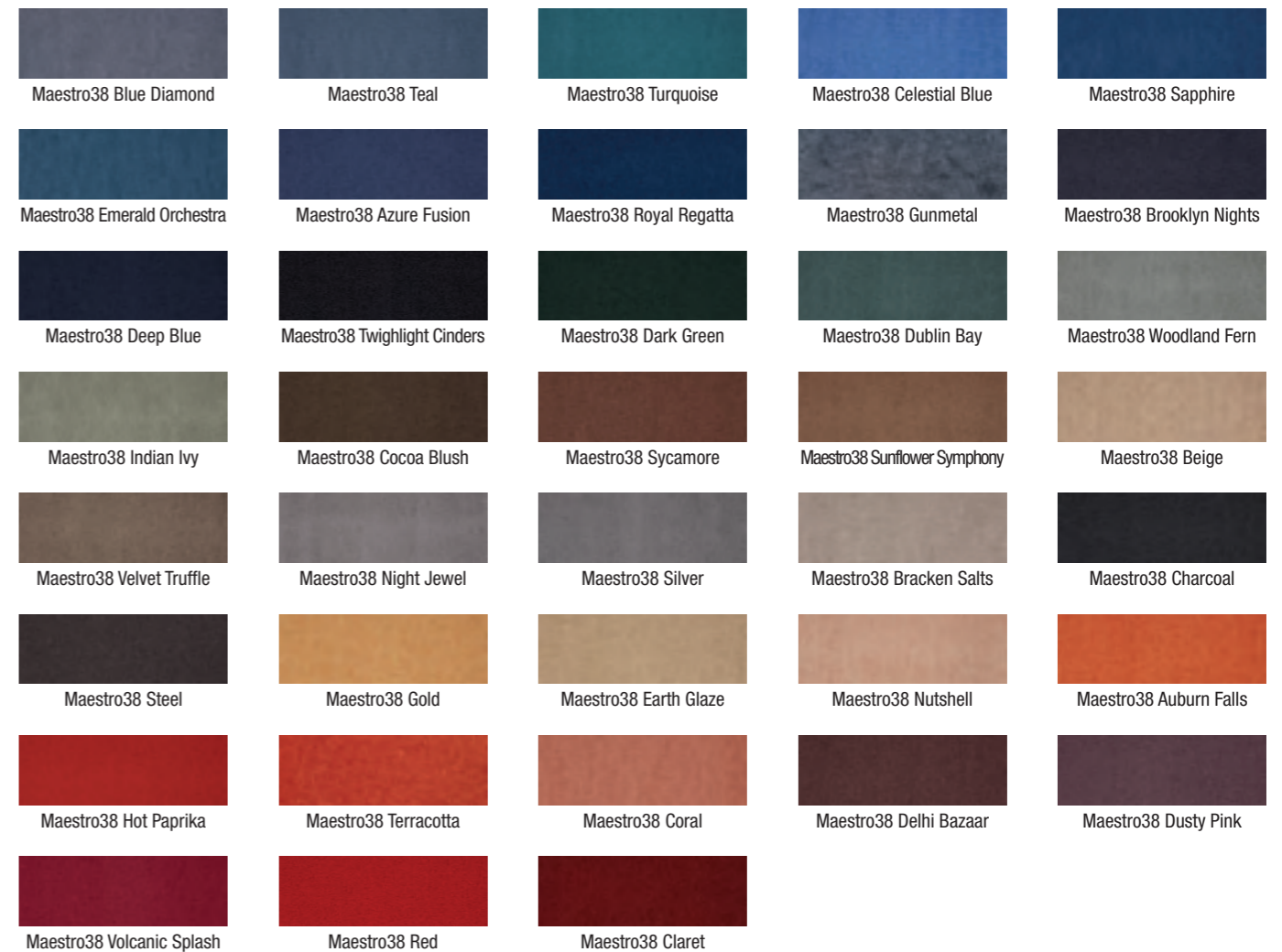
heavy contract : 6 colourways

design outpile

Maestro
Phenomenon
Harmonise

Maestro38

Compose your setting in tune with one of our most popular premium range carpets



- S** **Style**
1/12" gauge Tufted Cut Pile
- Y** **Yarn Construction**
100% Antron Nylon
- P** **Pile Yarn Weight**
1050 gsm
- P** **Pile Height**
5mm
- P** **Pile Density**
181,102 tufts per m2
- T** **Total Weight**
4955 gsm (Tile)
- T** **Total Thickness**
8mm
- B** **Backing**
Bitumen
- D** **Dimensions**
50cm x 50cm
- W** **Wear Classification**
Heavy Contract

- A** **Anti-static**
< 2kV body voltage. Suitable for use with computers
- C** **Colour Fastness**
To Light (ISO105 - B02) > 5
To Water (ISO 105 - E01) > 4
To Rubbing (ISO 105 - X12) > 4
- F** **Flammability**
Flammability (BS5287) Assessment and labelling of Textile Floorcoverings tested to BS4790
Low radius of Char
(Hot Metal Nut Test) CE Flam rating - Bfl-s1
- C** **Castor Chair Test**
BS EN 985 r value 2.8 continuous use
- 10** **Warranty**
10 Years

Suitable for office, commercial, retail, schools, colleges, and leisure

Heavy Contract

10 year warranty

Available in 38 designed colourways

1050 gsm
Pile Yarn Weight

Up to 50% of the total product is recycled content

Harmonise

Contemporary style with premium performance in broadloom



Harmonise
Crimson



Harmonise
Hedgerow



Harmonise
Burnt Orange



Harmonise
Ocean Green



Harmonise
Mahogany



Harmonise
Kew Gardens



Harmonise
Ash



Harmonise
Oxford Blue



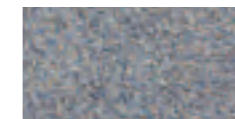
Harmonise
Regal



Harmonise
Rock Grey



Harmonise
Prussian Blue



Harmonise
Clock Tower



Harmonise
Tower Bridge



Harmonise
Cornflower Blue



Harmonise
Storm Cloud



Harmonise
Winter Sky



Harmonise
Gherkin



Harmonise
Smoke



Harmonise
Smithfields



Harmonise
Lambeth



Harmonise
Marble Arch



Harmonise
The Shard



Harmonise
Westminster



Harmonise
Canary Wharf

S **Style**
1/12" gauge Tufted Cut Pile

Y **Yarn Construction**
100% Antron Nylon

P **Pile Yarn Weight**
1,100 gsm

P **Pile Height**
4.5mm

P **Pile Density**
170,000 tufts per m2

T **Total Weight**
1,830 gsm

T **Total Thickness**
8mm

B **Backing**
Textile Bitumen

D **Dimensions**
25m x 4m – Nominal roll length
(Also available in a 5m width option,
pls check with the Paragon Sales
Office office)

W **Wear Classification**
Heavy Contract

A **Anti-static**
AATCC134
< 3kv body voltage

C **Colour Fastness**
To Light (BS EN ISO105-B02) 5
To Water (BS EN ISO105-E01) 4
To Shampoo (BS 1006-UK-TB)) 4
To Rubbing (BS EN ISO105-X12) 4

F **Flammability**
Floorcoverings tested to BS4790
(Hot Metal Nut Test) Low Radius
of Char

C **Castor Chair Test**
BS EN 985
> 2.4 Suitable for continuous use
with castor chairs

10 **Warranty**
10 Years

Suitable for commercial, prestigious office,
education and public areas

Heavy Contract

10 Year Warranty

100% Antron Nylon

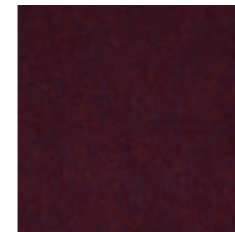
Available in 24 colourways

1,100 gsm
Pile Yarn Weight

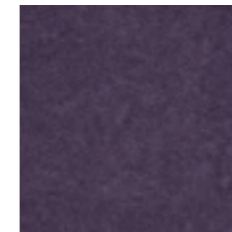
cutpile

Workspace Cutpile

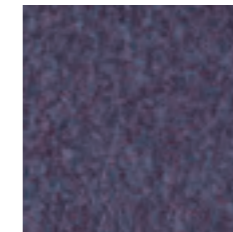
Make the most of any workspace with our high performance cutpile



Workspace Cutpile Salsa



Workspace Cutpile Lilac



Workspace Cutpile Grape Blue



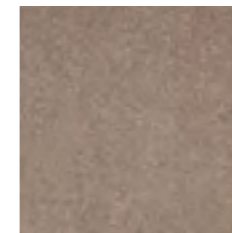
Workspace Cutpile Sky Blue



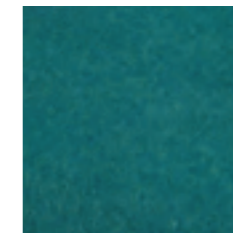
Workspace Cutpile Biscay Blue



Workspace Cutpile Coastal Blue



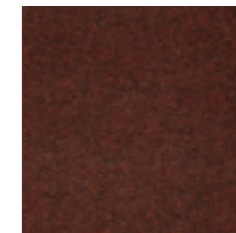
Workspace Cutpile Wheat



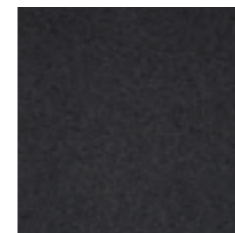
Workspace Cutpile Gecko Green



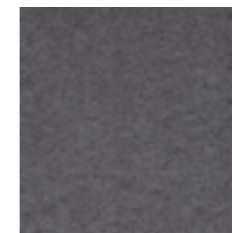
Workspace Cutpile Nordic Green



Workspace Cutpile Cayenne



Workspace Cutpile Iron Grey



Workspace Cutpile Steel Grey

S **Style**
Tufted Cut Pile 1/10" gauge

Y **Yarn Construction**
100% Solution Dyed Nylon

P **Pile Yarn Weight**
850 gsm

H **Pile Height**
5mm

D **Pile Density**
143,700 tufts per m²

T **Total Weight**
4650 gsm

T **Total Thickness**
8.5mm

B **Backing**
Bitumen Backing

D **Dimensions**
50cm x 50cm

W **Wear Classification**
Heavy Contract

A **Anti-static**
Suitable for use with computers. Less than 2Kv

C **Colour Fastness**
To Light (BS EN ISO105-B02) 6
To Water (BS EN ISO105-E01) 4 - 5
To Rubbing (BS EN ISO105-X12) 4 - 5
To Shampoo BS 1006 - UK - TB 4 - 5

F **Flammability**
Floorcoverings tested to BS4790 Low Radius (Hot Metal Nut Test) of Char
Euroclass Flammability (BS EN ISO 9239) Bfl-s1 (BS EN ISO 11925-2)

C **Castor Chair Test**
BS EN 985 2.4 Suitable for use with castor chairs

W **Warranty**
10 Years

10 Year Warranty

100% Solution Dyed Nylon

Suitable for Commercial, Education and Retail markets

Recyclable - Product can be repurposed at the end of its lifecycle as a non standard option

850 gsm

Pile Yarn Weight

Up to 50% of the total product is recycled content

Solaris

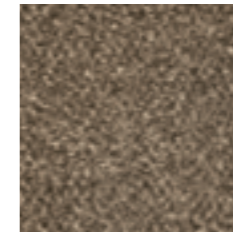
Stand out from the crowd with one of our premium ranges



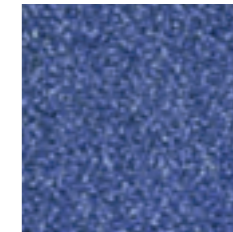
Solaris
Nix



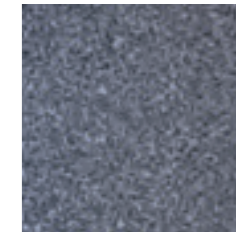
Solaris
Saturn



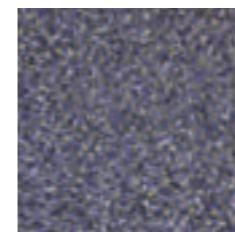
Solaris
Callisto



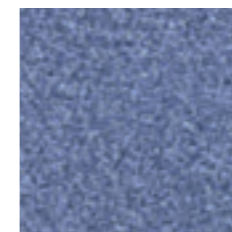
Solaris
Juno



Solaris
Telesto



Solaris
Janus



Solaris
Oberon



Solaris
Mercury



Solaris
Charon



Solaris
Calypso



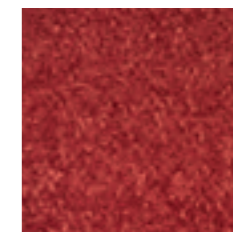
Solaris
Titan



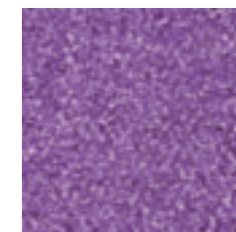
Solaris
Pandora



Solaris
Himalia



Solaris
Eris



Solaris
Phobos

S **Style**
Tufted Cut Pile Tile 1/10" gauge

Y **Yarn Construction**
100% Invista Nylon

P **Pile Yarn Weight**
1100 gsm

H **Pile Height**
5.5mm

T **Total Weight**
4950 gsm

T **Total Thickness**
8mm

B **Backing**
Bitumen Backing

D **Dimensions**
50cm x 50cm

W **Wear Classification**
Heavy Contract

A **Anti-static**
Less than 2Kv
Suitable for use with computers

C **Colour Fastness**
Light BS EN ISO105-BO2: 5
To Water BS EN ISO105-E01: 4
Rubbing BS EN ISO105-X12: 4 Dry, 3 Wet

F **Flammability**
BS4790 Low Radius of Char
CE Flammability rating - Bfl-s1

C **Castor Chair Test**
Test BS EN 985: >2.8 Suitable for
continuous use

10 **Warranty**
10 Years

Suitable for office, commercial, retail, schools,
colleges, and leisure

Heavy Contract

10 Year Warranty

Available in 15 designed colourways

100% Invista Nylon

Up to 50% of the total product is recycled content

heavy contract : 15 colourways

entrance matting

Eco Entrance Tyre Tile

Eco Entrance Tyre Tile

The Eco Warrior



Weight	8410gsm
Thickness	10mm
Composition	Rubber Tyre with Nylon Tread
Backing	Polyethylene Webbing
Tile Size	304mm x 304mm
Wear Classification	Heavy Contract
Flammability	DIN 4102 B1
Colour Fastness	To Light 6 Wet Rubbing 4-5 Dry Rubbing 5 Wet Shampoo 4-5

100% recyclable

Made from 100% recycled tyres

One of the lowest carbon footprint flooring products

We are ISO14001 environmental systems accredited

Manvers production facility is the cleanest in Europe

Extra heavy duty matting systems

Designed for entrance areas with heavy traffic

Suitable for trolley and wheelchair traffic

Scrapes and wipes dirt and moisture from shoes saving usage of chemicals in cleaning inner floro products

DDA conformity

heavy contract



paragon



Farfield Park
Manvers
Wath-upon-Deerne
Rotherham, S63 5DB.

T. +44 (0) 1709 763 839
F. +44 (0) 1709 763 813
E. sales@paragon-carpets.co.uk
W. www.paragon-carpets.co.uk

