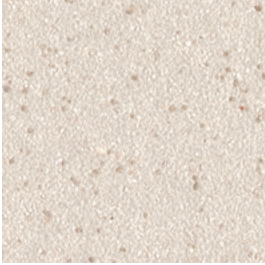


BAREFOOT & SHOD, WET & DRY.

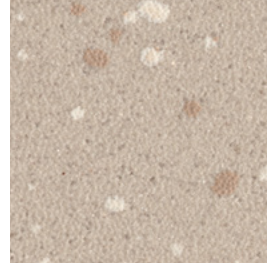
SAFETY FLOORING



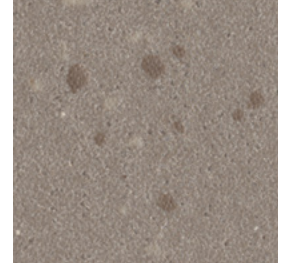
Chalk Dune 5766 ▲ w/r 5766
NCS S 1502-Y50R LRV 60



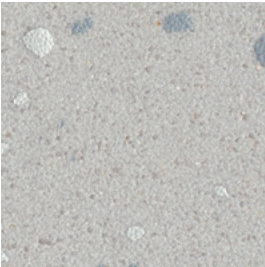
Lunar Shell 5772 ▲ w/r 5772
NCS S 1502-Y LRV 64



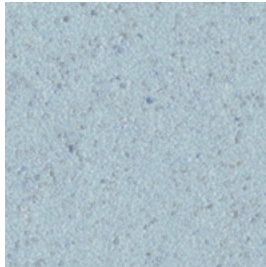
Barley Cove 5761 ▲ w/r 5212
NCS S 3005-Y50R LRV 47



Truffle Shore 5762 ▲ w/r 5762
NCS S 5005-Y50R LRV 24



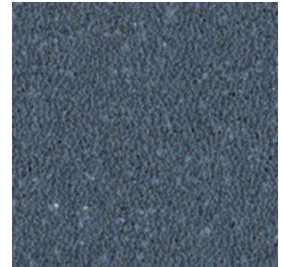
Sea Spray 5763 ▲ w/r 5202
NCS S 3000-N LRV 49



Sea Mist 5768 w/r 5205
NCS S 2010-B LRV 46



Calm Azure 5770 w/r 5206
NCS S 2030-R90B LRV 31



Deep Lagoon 5771 w/r 5207
NCS S 6010-R90B LRV 12

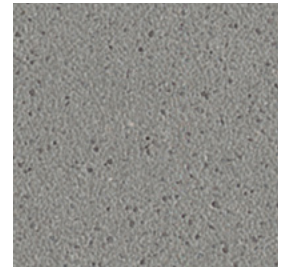


HSE Compliant
50+
Pendulum Wet Test

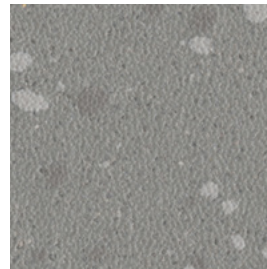
Sustainable Slip Resistance
throughout product's guaranteed life



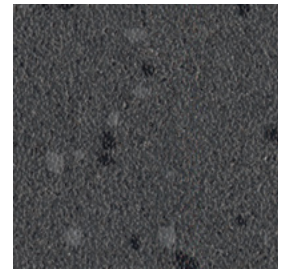
Cool Pebble 5767 w/r 2090
NCS S 3000-N LRV 46



Slate Haze 5773 w/r 5764
NCS S 5000-N LRV 26



Coastal Flint 5764 ▲ w/r 5764
NCS S 4500-N LRV 26



Granite Sky 5765 ▲ w/r 4490
NCS S 7502-B LRV 10

w/r = weld rod NCS = Natural Colour System LRV = Light Reflectance Value

▲ = These colours contain a tonal chipped decoration



Refer to BRE Global ratings on www.greenbooklive.com