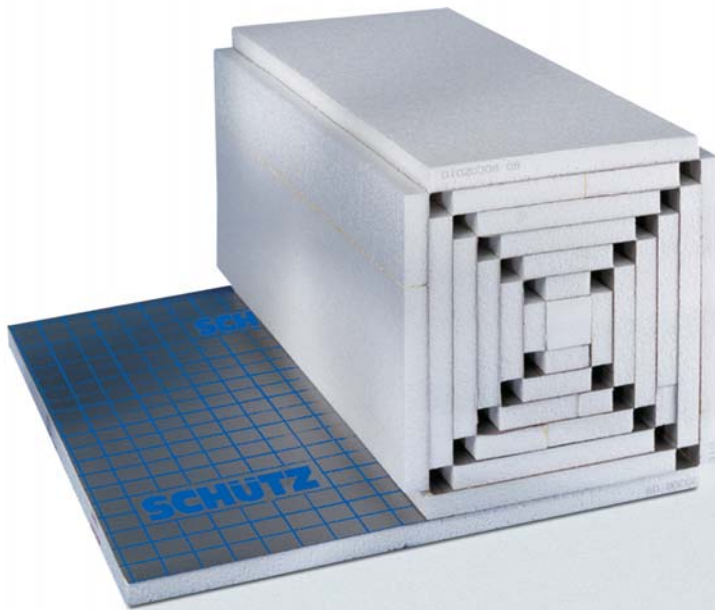


# quadro-takk – the square tacker system for underfloor heating from SCHÜTZ.



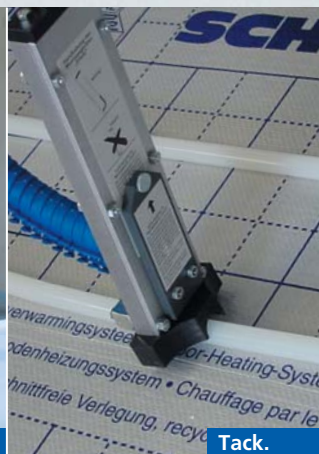
## Roll out – Tack – Ready.

With the quadro-takk folding roll from SCHÜTZ installation is especially efficient, time saving and economical.

One brilliant principal, loads of benefits: quadro-takk offers optimum thermal and impact sound insulation and can be easily stored and transported thanks to its square shape.



Roll out.



Tack.



Ready.

**SCHÜTZ**  
ENERGY SYSTEMS

# quadro-takk – the practical and economical solution from SCHÜTZ.

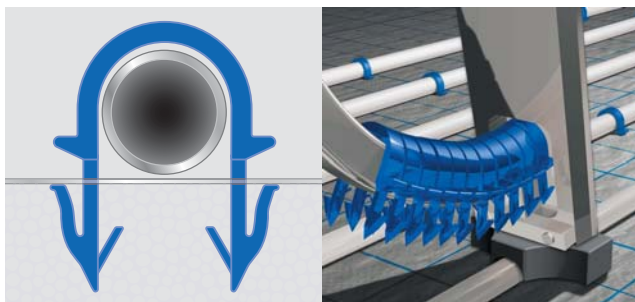
It really doesn't get any simpler and quicker than this:  
the quadro-takk square folding roll from SCHÜTZ.

- **Excellent installation characteristics.** As a roll for large spaces or a folding panel for small rooms (no bowl effect common with round insulation rolls).
- **Efficient use of materials.** Can be installed without waste.
- **Optimum use of floor space and rooms.** For a clear overview of stocks in the warehouse, minimised space requirements on the HGV, easy material distribution on the building site and a handy format and clean product presentation for the customer.
- **Clean covering of gaps.**
- **Safe and secure heating pipe installation and assembly.** Interwoven fibre plastic coating in combination with special heating pipe holders at predetermined installation intervals.

For every situation quadro-takk:

Type	Thickness	Heat conductivity	Impact sound insulation effect*	Maximum traffic load	Application
EPS-T 35-3	35/32 mm	0.78 m <sup>2</sup> K/W	29 dB	4 kPa**	standard, single layer installation
EPS-T 30-3	30/27 mm	0.67 m <sup>2</sup> K/W	28 dB	4 kPa**	double layer installation
EPS-T 30-2	30/28 mm	0.75 m <sup>2</sup> K/W	28 dB	5 kPa**	single layer installation, higher traffic load
EPS-T 25-2	25/23 mm	0.56 m <sup>2</sup> K/W	28 dB	5 kPa**	double layer installation, higher traffic load
EPS 100-30	30 mm	0.75 m <sup>2</sup> K/W	0 dB	100 kPa**	high traffic load, no sound impact reduction

\*for screed according to DIN 18560 Part 2 with m' ≥ 70 kg/m<sup>2</sup> / \*\*according to DIN EN 13163



Stable, 8 mm wide pipe staples fix the SCHÜTZ heating pipes securely in place.

“Erwin”, the practical installation aid, helps tack the heating pipe holders.



SCHÜTZ GmbH & Co. KGaA  
Schützstraße 12  
D-56242 Selters  
Phone +49 (0) 26 26 / 77- 0  
Fax +49 (0) 26 26 / 77- 12 21  
E-Mail [info2@schuetz.net](mailto:info2@schuetz.net)  
[www.schuetz.net](http://www.schuetz.net)