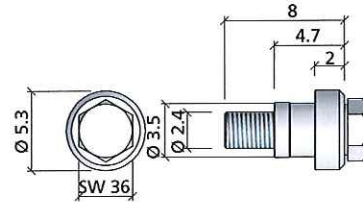


Suspension screw M24

Black, SW 36, with yellow chromated thrust ring. Is used to screw the suspension shoe to the climbing cone.

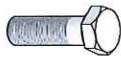


Ref. No.	Description / Application	m ²	kg
29-412-80	Suspension screw M24	0.8	

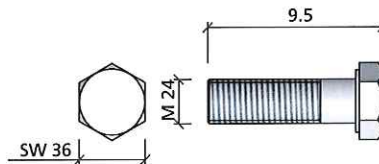


Hexagonal screw M24x80, 10.9

Black, SW 36. Is used to attach climbing cones to the facing. Is used instead of positioning disc M24 if facing can be drilled. A washer M24 is also required.



Ref. No.	Description / Application	m ²	kg
63-119-53	Hexagonal screw M24x80, 10.9 black DIN 931		

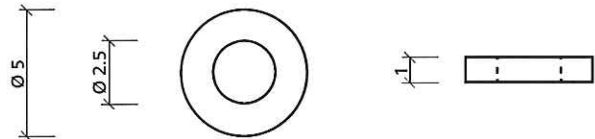


Washer M24, DIN 7349-25

Galvanized. Is required when attaching climbing cones with hexagonal screws M24x80 or safety eyes with hexagonal screws M24x50. Washer is 10 mm thick.

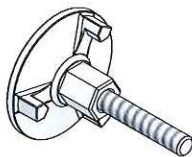
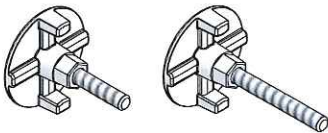


Ref. No.	Description / Application	m ²	kg
62-030-50	Washer M24, galv., DIN 7349-25		
29-412-78	Washer D40xD26x4, galv., DIN 1440-26		

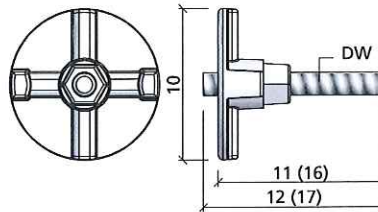


Anchor plate

Uncoated. Is used to anchor climbing cones in the concrete. The admissible load capacity depends on the installation depth of the anchor plate and concrete strength at the time of loading (see approval No. 21.6-1751 by the DIBt [German Institute for Construction Technology]).



Ref. No.	Description / Application	m ²	kg
29-412-30	Anchor plate 15/120	0.8	
29-412-35	Anchor plate 15/170	0.9	
29-412-37	Anchor plate 20/170	1.9	



The numbers in parentheses refer to anchor plate 15/170

