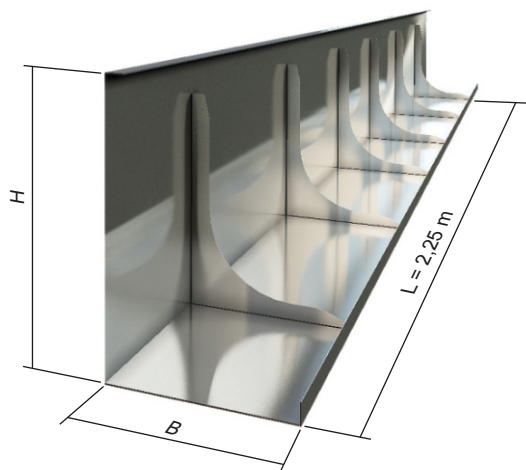




FORMTEC EDGE - is a permanent formwork made of metal sheet. It is used for making reinforced concrete slabs.



FORMTEC EDGE is **SELF - SUPPORTING** up to 50cm. For $H \geq 50\text{cm}$ additional supports are recommended.

Advantages:

- fast and easy installation
- light construction
- no additional supports needed up to 50cm (backfilling with concentrated ground is recommended)
- saving on smaller excavation for foundations

FORMTEC EDGE formwork reduces costs.

Using FORMTEC EDGE formwork excavation for foundation can be narrower by around 1m.

Health and safety:

During installation the safety rules must be followed - protective gloves and clothes with long sleeves should be worn.

Storage:

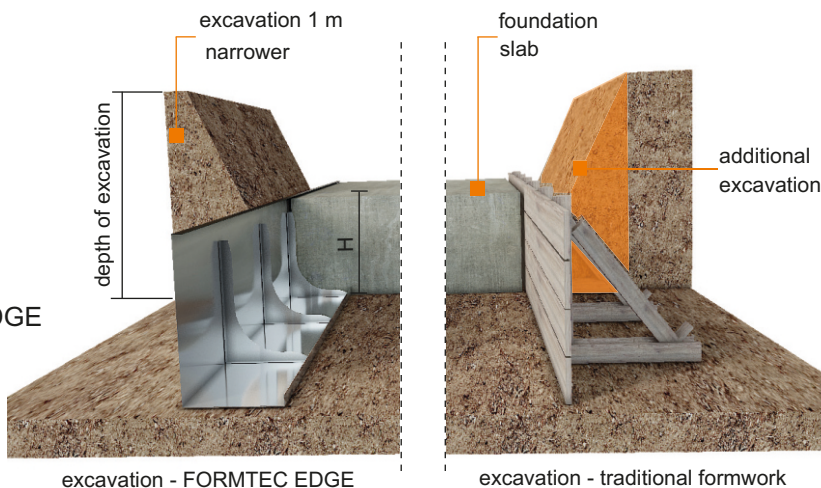
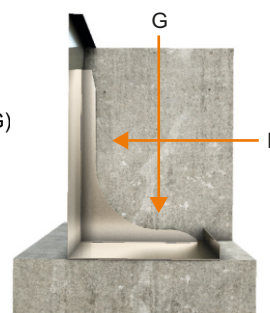
Product should be kept in rooms that are protected from moisture and precipitation.

Transportation:

Metal sheets on the pallet with secured edges and wrapped in foil; all accessories in separate packages.

Possibility of manufacturing FORMTEC EDGE formwork in any given dimension required by the projects.

concrete pressure (F)
= weight of concrete (G)



excavation - FORMTEC EDGE

excavation - traditional formwork

ARTICLE NUMBER	TYPE	HEIGHT H [cm]	WIDTH B [cm]	LENGTH L [m]	QUANTITY [items/palet]
530-01	EDGE 14	14	12	2,25	224
530-03	EDGE 18	18	12	2,25	120
530-04	EDGE 20	20	12	2,25	120
530-05	EDGE 22	22	13	2,25	120
530-06	EDGE 24	24	14	2,25	90
530-07	EDGE 25	25	15	2,25	90
530-10	EDGE 30	30	18	2,25	90
530-11	EDGE 35	35	21	2,25	60
530-12	EDGE 40	40	24	2,25	60
530-13	EDGE 45	45	27	2,25	60
530-14	EDGE 50	50	30	2,25	60
530-15	EDGE 55	55	33	2,25	60
530-16	EDGE 60	60	36	2,25	60