

Interchar® 1120

Thin film water-borne intumescent coating optimised
for 90 and 120 minutes fire resistance

As part of the Interchar range for cellulosic fire protection, Interchar 1120 will maintain your architectural aesthetics for fire resistance periods up to 120 minutes on structural steelwork.

Tested and approved to the highest standards, Interchar 1120 is another reason to choose International Paint as your fire protection supplier.

- Approved to a wide range of fire standards
- Third party Certifire approval
- Tested for surface spread of flame, smoke development and toxicity levels
- Compatible with a wide range of primers and a full topcoat colour range including water-borne options
- Suited to on-site application
- Fast drying characteristics for excellent productivity
- Single pack product for fast and easy single leg airless spray application
- High solids, low odour, zero VOC formulation*



Interchar 1120

Fireproofing without compromising aesthetics

Interchar 1120 has been developed using proprietary technology specifically to meet the need for a more sustainable approach to architectural fire protection.

- Interchar 1120 development, testing and manufacture meets the highest standards and has been independently verified.

Fire Protection with Aesthetic Appeal

Interchar 1120 has been designed to allow fireproofing without compromising aesthetic appeal:

- Competitive dry film thicknesses
- Applied as a thin layer, it does not compromise intricate designs and shapes created from the structural steel
- Easy over-coating with a wide range of coloured finishes

Approvals

BS 476 Parts 20-21: Fire Resistance of Elements of Construction

AS 1530.4: Fire Resistance Test of Elements of Construction

UL 263: Fire Tests of Building Construction and Materials

GB 14907: Guobiao - Chinese National Standard

Interchar 1120 is undergoing continual testing and approvals. Please contact International Protective Coatings for an up to date listing.

Testing to the Highest Standard

The CERTIFIRE system involves type testing and audit testing for fire and non-fire performance together with factory production control. It is important to know that the products supplied and installed will provide the same level of performance as those tested.

- Third party certified by Certifire



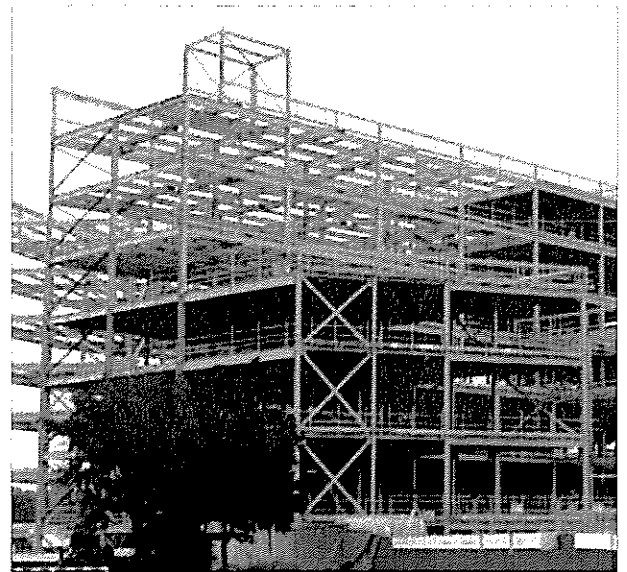
Interchar 1120 has been tested to the ASFP protocol to account for beams with web openings. This permits optimised dry film thicknesses to be specified for beams with circular, rectangular and castellated openings.

www.international-pc.com
protectivecoatings@akzonobel.com

✕ and **International** and all product names mentioned in this publication are trademarks of, or licensed to, AkzoNobel. © AKZONOBEL 2011.

International Protective Coatings has used its best endeavours to ensure that the information contained in this publication is correct at the time of printing. Please contact your local International Protective Coatings representative if you have any questions.

Unless otherwise agreed by us in writing, any contract to purchase products referred to in this brochure and any advice which we give in connection with the supply of products are subject to our standard conditions of sale.



Victoria Hospital, Scotland

Typical Uses

Provides intumescent fire protection to structural steelwork while maintaining architectural aesthetics for commercial infrastructure assets including: -

- Airports
- Stadia and Leisure Facilities
- Office Buildings
- Retail Complexes

One Supplier, One Solution

Project construction aspects and client aesthetic requirements may require the use of both a primer and coloured topcoats.

You can have confidence in International Paint because we test complete systems and can offer a single point supply and support.

This product has been developed in a controlled ISO 9001 Quality Approved laboratory environment. It has been tested in a UKAS approved laboratory and is manufactured to ISO 9002. International Paint makes no representation that the exhibited published test results, or any other tests, accurately represent results actually found in all field environments. As application, environmental and design factors can vary significantly, due care should be exercised in the selection, verification of performance and use of the coatings.

PRODUCT DESCRIPTION

A single pack, chlorine-free, water borne intumescent coating, independently tested at UKAS accredited laboratories, with zero VOC according to EU Solvent Emissions Directive.

As a water borne product, Interchar 1120 offers a more environmentally friendly option for protection of structural steelwork, especially where aesthetics are important. Its very low odour allows for application on site and in occupied or hygienically sensitive areas.

INTENDED USES

To provide up to 2 hours fire protection on I-section beams, columns and hollow sections in internal environments.

PRACTICAL INFORMATION FOR INTERCHAR 1120

Colour	White, Cool Green
Gloss Level	Matt
Volume Solids	68% ± 3% (measured according to ISO 3233 and BCF Guidance Method)
Typical Thickness	300-700 microns (12-28 mils) dry equivalent to 441-1029 microns (17.6-41.2 mils) wet
Theoretical Coverage	1 m ² /litre at 700 microns d.f.t and stated volume solids 39 sq.ft/US gallon at 28 mils d.f.t and stated volume solids
Practical Coverage	Allow appropriate loss factors
Method of Application	Airless Spray, Brush, Roller

Drying Time

			Overcoating interval with self	
Temperature	Touch Dry	Hard Dry	<i>Minimum</i>	<i>Maximum</i>
10°C (50°F)	5 hours	6 hours	24 hours	Extended ¹
15°C (59°F)	4 hours	5 hours	24 hours	Extended ¹
25°C (77°F)	2 hours	4 hours	20 hours	Extended ¹
40°C (104°F)	1 hour	3 hours	18 hours	Extended ¹

¹ See International Protective Coatings Definitions and Abbreviations

All drying time data has been quoted at the typical thickness of 700 microns (28 mils) d.f.t.

Minimum overcoating interval of Interchar 1120 with topcoats is 24 hours. Further details on minimum overcoating times are contained in the Application Guidelines.

REGULATORY DATA

Flash Point	>101°C (214°F)	
Product Weight	1.40 kg/l (11.7 lb/gal)	
VOC	0.16 lb/gal (20 g/lit)	EPA Method 24
	0 g/kg	EU Solvent Emissions Directive (Council Directive 1999/13/EC)

See Product Characteristics section for further details



Ecotech is an initiative by International Protective Coatings a world leader in coating technology to promote the use of environmentally sensitive products across the globe.

SURFACE PREPARATION

All surfaces to be coated should be clean, dry and free from contamination. Prior to application, all surfaces should be assessed and treated in accordance with ISO 8504:2000. Oil or grease should be removed in accordance with SSPC-SP1 Solvent Cleaning.

Primed Steelwork

Interchar 1120 should always be applied over a recommended anti-corrosive coating scheme. The primer surface should be dry and free from all contamination and Interchar 1120 must be applied within the overcoating intervals specified (consult the Interchar 1120 Application Guidelines).

Areas of breakdown, damage etc., should be prepared to the specified standard (e.g. Sa2½ (ISO 8501-1:2007) or SSPC-SP6, Abrasive Blasting, or SSPC-SP11, Power Tool Cleaning) and a full coat of primer applied prior to overcoating with Interchar 1120 .

Metallic Zinc Primed Surfaces

Interchar 1120 can be applied over approved epoxy metallic zinc primers, provided that these have been overcoated with an approved tie coat first. Ensure that the primed surface is clean, dry and free from contamination prior to application of the Interchar 1120 . Recommended tie coats are Intergard 269 or Intergard 276.

APPLICATION

Mixing	This material is a one component coating and should always be mixed thoroughly with a power agitator before application.	
Mix Ratio	Not applicable	
Airless Spray	Recommended	Tip Range 0.43-0.53 mm (17-21 thou) Total output fluid pressure at spray tip not less than 175 kg/cm ² (2489 p.s.i.)
Air Spray (Pressure Pot)	Not recommended	
Air Spray (Conventional)	Not suitable	
Brush	Suitable - Small areas	Typically 100-300 microns (4.0-12.0 mils) can be achieved
Roller	Suitable - Small areas	Typically 100-300 microns (4.0-12.0 mils) can be achieved
Thinner	Not normally required.	
Cleaner	Clean Water	
Work Stoppages	Do not allow material to remain in hoses, guns or spray equipment. Thoroughly flush all equipment with clean water. Do not use organic solvents.	
Clean Up	All unused material should be stored in tightly closed containers. Partially filled containers may show surface skinning after storage.	
Clean Up	Clean all equipment immediately after use with clean water. It is good working practice to periodically flush out spray equipment during the course of the working day. Frequency of cleaning will depend upon amount sprayed, temperature and elapsed time, including any delays.	
Clean Up	All surplus materials and empty containers should be disposed of in accordance with appropriate regional regulations/legislation.	

PRODUCT CHARACTERISTICS

The detailed Interchar 1120 Application Guidelines should be consulted prior to use.

Interchar 1120 must be protected from freezing at all times during storage and transport. For optimum application and drying characteristics, the air and substrate temperature should be greater than 10°C (50°F) and relative humidity less than 80%. Good air flow and ventilation should be maintained to improve drying and recoat properties and speed up the application. Application at temperatures below 10°C (50°F) will retard drying and extend overcoatings intervals, as will higher humidities.

Surface temperature must always be a minimum of 3°C (5°F) above dew point. In line with good painting practice, application should not take place in conditions which are deteriorating, e.g. the temperature is falling or there is a risk of condensation forming.

Maximum film build in one coat is best attained by airless spray. When applying by methods other than airless spray, the required film build is unlikely to be achieved.

Care must be taken not to over-apply on areas such as internal angles, corners, edges, etc.

The finished appearance of Interchar 1120 is dependent on application method. For visible areas spray application is preferred, which can provide a smooth finish. Higher decorative finishes may require additional preparation before application of topcoats; please see Application Guidelines for further information. Sealer coats are not necessary in environments which are classed as ISO 12944-2 C1.

Interchar 1120 is approved to a range of standards; please contact International Protective Coatings for further details.

When used in combination with an anti-corrosive primer and suitable topcoat(s), Interchar 1120 can be used for internal environments classified up to C3, as defined in ISO 12944-2:1998. Interchar 1120 (whether sealed or not) should be protected from pooling or running water. Interchar 1120 is not designed for frequent water immersion/soaking.

Note: VOC values are typical and are provided for guidance purpose only. These may be subject to variation depending on factors such as differences in colour and normal manufacturing tolerances.

SYSTEMS COMPATIBILITY

The following primers are approved for use with Interchar 1120 :

Intercryl 525	Intercure 200
Intercure 200HS	Intergard 251
Intergard 269	Intergard 276
InterH2O 499	Interprime 306
Interseal 670HS	

Interchar 1120 may also be applied over Interzinc 52 providing a suitable tie coat is also used; please see Surface Preparation section.

The following topcoats are approved for use with Interchar 1120 :

Intersheen 579	Interthane 870
Interthane 990	

There is a wider range of topcoats which may be suitable for application to Interchar 1120 ; please contact International Protective Coatings for further information and assistance.

ADDITIONAL INFORMATION

Further information regarding industry standards, terms and abbreviations used in this data sheet can be found in the following documents available at www.international-pc.com:

- Definitions & Abbreviations
- Surface Preparation
- Paint Application
- Theoretical & Practical Coverage
- Interchar 1120 Application Guidelines

Individual copies of these information sections are available upon request.

SAFETY PRECAUTIONS

This product is intended for use only by professional applicators in industrial situations in accordance with the advice given on this sheet, the Material Safety Data Sheet and the container(s), and should not be used without reference to the Material Safety Data Sheet (MSDS) which International Protective Coatings has provided to its customers.

All work involving the application and use of this product should be performed in compliance with all relevant national, Health, Safety & Environmental standards and regulations.

In the event welding or flame cutting is performed on metal coated with this product, dust and fumes will be emitted which will require the use of appropriate personal protective equipment and adequate local exhaust ventilation.

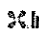
If in doubt regarding the suitability of use of this product, consult International Protective Coatings for further advice.

PACK SIZE	Unit Size	Vol	Pack
	20 litre	20 litre	20 litre
For availability of other pack sizes, contact International Protective Coatings.			
SHIPPING WEIGHT	Unit Size		
	20 litre	30.2 kg	
STORAGE	Shelf Life	6 months minimum at 25°C. Subject to re-inspection thereafter.	
		Store in dry, shaded conditions away from sources of heat and ignition. Protect from frost.	

Important Note

The information in this data sheet is not intended to be exhaustive; any person using the product for any purpose other than that specifically recommended in this data sheet without first obtaining written confirmation from us as to the suitability of the product for the intended purpose does so at their own risk. All advice given or statements made about the product (whether in this data sheet or otherwise) is correct to the best of our knowledge but we have no control over the quality or the condition of the substrate or the many factors affecting the use and application of the product. Therefore, unless we specifically agree in writing to do so, we do not accept any liability at all for the performance of the product or for (subject to the maximum extent permitted by law) any loss or damage arising out of the use of the product. We hereby disclaim any warranties or representations, express or implied, by operation of law or otherwise, including, without limitation, any implied warranty of merchantability or fitness for a particular purpose. All products supplied and technical advice given are subject to our Conditions of Sale. You should request a copy of this document and review it carefully. The information contained in this data sheet is liable to modification from time to time in the light of experience and our policy of continuous development. It is the user's responsibility to check with their local International Paint representative that this data sheet is current prior to using the product.

Copyright © AkzoNobel, 02/03/2011.

 International, International and all product names mentioned in this publication are trademarks of, or licensed to, AkzoNobel.

www.international-pc.com