

BERRY ALLOC[®]

VINYL PLANKS



EN



PURE CLICK

 **x6** | 2,25 m² | L 1836 X W 204 X 5 mm
24.19 SQFT | L 72.28" X W 8.03" X TH 0.20"

CLICK DESIGN FLOORING



Discover our products

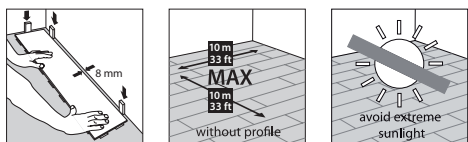


Beaulieu
International
Group
Flooring
Solutions

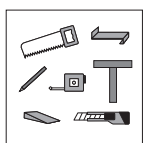
1. Introduction

Pure Click is an LVT floor with a new and revolutionary click system, designed for use in residential areas and produced according to the EN 10582 norm. Pure Click is suited for residential use. From shops to hotelrooms to the comfort of your own living room. Pure Click is not suitable for any outside use, sunrooms, solariums and saunas. We also recommend not to install the product in rooms that are not temperature controlled. Avoid long-lasting exposure to direct sunlight. Extreme solar irradiation, hotness and strong temperature changes can cause damage. The largest recommended installation area is 10 x 10 m (33 ft by 33 ft). An expansion profile must be used if the area is longer/wider than 10 m (33ft). It is important to leave a 8 mm (5/16") expansion gap around the total perimeter of the floor and around columns, pipes, thresholds, etc.

Pure Click is compatible with floor heating and cooling systems provided that the heated floor temperature does not exceed 27° (80°F). Turn off your floor heating 24 hours before, during installation, and 24 hours after installation. In case of electrical floor heating systems we advice not to exceed 60 W/m². Gradually turn up your floorheating by 5°C daily starting 24 hours after installation.



2. Preparation



2.1 Tools, accessories

Trimming knife or jig-saw or guillotine / pencil / a T-square, folding rule/ measuring tape and spacers (wedges).

2.2 Subfloor conditions



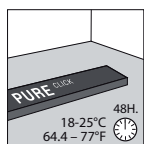
Careful subfloor preparation is vital for an excellent floor appearance. Roughness or unevenness of the subfloor (more than 3 mm per m) may telegraph through the new floor resulting in an unsightly surface and cause excessive wear on high spots or indentation on low spots. You must clean the working area and clear away any debris which could potentially damage finished floor panel fitting. The surface on which you place the vinyl planks should be perfectly hard, even and dry. It must be clean, bump-free and free of traces of plaster, paint, oil, grease or cracks. Textile floor coverings and needle felts must be removed.

Floor level must be maximum 3 mm (1/8") per m. If the indicated deviation is exceeded, the subfloor should be evened-out with a suitable filler or levelling product. Subfloors must be carefully checked for moisture problems. If there is moisture, carry out sealing before installation. It is not necessary to fill the grouts of a subfloor of ceramic tiles with joints.

Pure Click can be installed on top of concrete, tiles, wood, and most existing hard-surface floor coverings, provided that the existing surface is smooth or can be made smooth.

Maximum moisture content in a screed/concrete floor is 75 % RH at min. 20°C (68°F) (max. 3,0 CM %). If you are not certain about the quality or suitability of your subfloor for installation of Pure Click, then contact your dealer; he will be more than happy to help you. Although Pure Click is insensitive to moisture, excessive moisture can generate mould or fungus.

We advise to only use a BerryAlloc LVT underlay (DreamTec +) to reduce the walking and transition sound performance. In humid rooms such as bathrooms, we recommend to place a waterproof membrane in case your subfloor is not water resistant (f.e. wooden beams).



2.3 Acclimatization

Keep the panels in the unopened package at room temperature for at least 48 hours before you start the installation. Stack horizontally in the fitting location, decorative side up. The ideal indoor climatic conditions are 18-25°C (65-75° F). Maintain this temperature during installation as well.

Make sure you are satisfied with the flawless conditions of the flooring delivered before the installation begins. Claims cannot be made on goods that have been cut to size or laid. You should mix and fit floor panels from several different boxes to minimize shade variations. This will insure a more natural looking floor.

Pure Click flooring should be installed floating, meaning that it should be allowed to move in any direction having enough space to all walls or any fixed objects i.e. not to be screwed or nailed down to the subfloor.

3. Installation

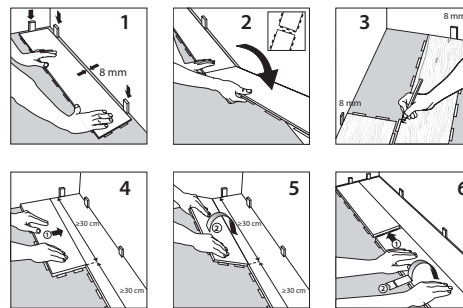
Check that the floor planks are without visible defects before installing them! Accurately measure the room to accommodate a balanced layout. By doing this you will be able to determine if the first row needs to be cut. The first and last row should not be less than 5 cm (2") wide. If the first row of floor panels does not need to be trimmed in width, it will be necessary to cut off the unsupported tongue so that a clean, solid edge is facing the wall.

Locking the planks together.

Don't use a hammer to put the planks together. Cut boards with stanley knife decor side up. Always ensure that the short end joints will be staggered minimum 25 cm (10")

(= 3 click elements) when you start the next row. For natural result use the piece left over from end of previous row as a first piece of new row (provided that this piece is at least 30 cm /10" long). You can install Pure Click in various ways, we advise you to: from second row, always connect the short side first and then connect the long side. Consider saving a few planks for any potential future repairs.

We recommend that planks should be installed with their length parallel to the incoming sunlight.



4. Finishing

Always use Pure Click accessories for a perfect result.

5. Instructions for use

To keep your floor in good condition, it is important to place doormats at all entrances to eliminate abrasive particles driven by footwear (gravel, pebbles, ...).

Use felt protector pads under the feet of furniture items or under other heavy objects.

Do not use rubber carpets.

Use soft, non-rubber wheels for office chairs.

6. Cleaning instructions

6.1 Initial Cleaning

First remove all dirt and dust from the flooring with a brush or vacuum cleaner. Then clean with water and a neutral appropriate cleaning agent, at least twice and until the water stays clean. We strongly recommend to use BERRYALLOC Vinyl Planks cleaning agents. Any other cleaning product may contain agents that damage resilient floor surfaces. The coating of the top-layer makes a specific treatment after installation unnecessary.

6.2 Regular cleaning instructions

Vacuum or wet mop. Use when required a solution of clean water and mild detergent or domestic floor cleaning emulsion. We strongly recommend to use BERRYALLOC Vinyl Planks Cleaning products as other products may damage your flooring surface. Do not pour water over the floor or leave a puddle of water on the floor. Rinse thoroughly and soak up residual water. NB: the floor can feel more slippery when becoming wet. Spots, marks and spillages should be wiped up as soon as possible.

Do not use acetone or chlorinated solvents. Never use wax or varnish coating.

Never use maintenance products that contain wax or oil.

7. Warranty info and conditions

Warranty for first user:

Pure Click planks are guaranteed under normal conditions of use against any manufacturing defects from their date of purchase to the original customer.

This warranty covers all abnormal degradation of this product, given that Pure Click planks are installed and maintained in accordance with the instructions provided. This warranty covers the replacement of Pure Click planks determined as defective with equivalent- or similar-quality Pure Click planks from the product line existing at the time of the claim. This warranty does not involve a financial reimbursement under any circumstances or costs of removal or installation.

This warranty does not cover:

- Normal wear and tear
- Any mechanical damage or other alteration caused by use not in accordance with the BerryAlloc installation instructions
- The occurrence of accidents, misuse or abuse
- Damage caused by using incorrect cleaning methods or unsuitable detergents
- Damage due to heavy chairs or furniture: it is recommended that you use felt pads under chairs and furniture to reduce the possibility of surface scratching and marking
- Damage due to sand or grit: it is recommended to use doormats on the inside and outside of all external doorways to prevent grit from being carried around across the floor
- Damage due to scratching
- when noticing a defect, contact your dealer within 2 weeks with your original purchase receipt.

For more information: www.berryalloc.com

8. Legal information

This document presents the general installation instructions, based on the latest available information. For best result, and validity of the guarantee, these instructions should be followed carefully.